

Datasheet for ABIN2462354

anti-CPEB2 antibody[Go to Product page](#)**1** Image

Overview

Quantity:	100 µL
Target:	CPEB2
Reactivity:	Human, Mouse
Host:	Rabbit
Clonality:	Polyclonal
Conjugate:	This CPEB2 antibody is un-conjugated
Application:	ELISA, Western Blotting (WB)

Product Details

Immunogen:	Antibody produced in rabbits immunized with a synthetic peptide corresponding a region of human CPEB2.
Purification:	Antibody is purified by peptide affinity chromatography method.

Target Details

Target:	CPEB2
Alternative Name:	CPEB2 (CPEB2 Products)
Background:	CPEB2 is highly similar to cytoplasmic polyadenylation element binding protein (CPEB), an mRNA-binding protein that regulates cytoplasmic polyadenylation of mRNA as a trans factor in oogenesis and spermatogenesis. Studies of the similar gene in mice suggested a possible role of this protein in transcriptionally inactive haploid spermatids.
Molecular Weight:	40 kDa, 65 kDa

Target Details

Gene ID:	132864
NCBI Accession:	XP_945422
UniProt:	Q7Z5Q1

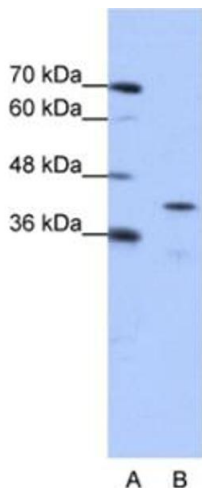
Application Details

Application Notes:	CPEB2 antibody can be used for detection of CPEB2 by ELISA at 1:312500. CPEB2 antibody can be used for detection of CPEB2 by western blot at 0.25 µg/mL, and HRP conjugated secondary antibody should be diluted 1:50,000 - 100,000.
Restrictions:	For Research Use only

Handling

Format:	Lyophilized
Reconstitution:	Add 50 µL of distilled water. Final antibody concentration is 1 mg/mL.
Concentration:	1 mg/mL
Buffer:	Antibody is lyophilized in PBS buffer with 2 % sucrose.
Handling Advice:	As with any antibody avoid repeat freeze-thaw cycles.
Storage:	4 °C/-20 °C
Storage Comment:	For short periods of storage (days) store at 4 °C. For longer periods of storage, store CPEB2 antibody at -20 °C.

Images



Western Blotting

Image 1.