



[Go to Product page](#)

Datasheet for ABIN2462355

anti-CPEB2 antibody

1 Image

Overview

Quantity:	100 µL
Target:	CPEB2
Reactivity:	Human, Mouse, Rat
Host:	Rabbit
Clonality:	Polyclonal
Conjugate:	This CPEB2 antibody is un-conjugated
Application:	ELISA, Western Blotting (WB)

Product Details

Immunogen:	Antibody produced in rabbits immunized with a synthetic peptide corresponding a region of human CPEB2.
Purification:	Antibody is purified by peptide affinity chromatography method.

Target Details

Target:	CPEB2
Alternative Name:	CPEB2 (CPEB2 Products)
Background:	CPEB2 is highly similar to cytoplasmic polyadenylation element binding protein (CPEB), an mRNA-binding protein that regulates cytoplasmic polyadenylation of mRNA as a trans factor in oogenesis and spermatogenesis. Studies of the similar gene in mice suggested a possible role of this protein in transcriptionally inactive haploid spermatids. The protein encoded by this gene is highly similar to cytoplasmic polyadenylation element binding protein (CPEB), an mRNA-

Target Details

binding protein that regulates cytoplasmic polyadenylation of mRNA as a trans factor in oogenesis and spermatogenesis. Studies of the similar gene in mice suggested a possible role of this protein in transcriptionally inactive haploid spermatids. Alternatively spliced transcript variants encoding distinct isoforms have been described.

Molecular Weight: 65 kDa, 62 kDa

Gene ID: 132864

NCBI Accession: [NP_872291](#)

UniProt: [Q7Z5Q1](#)

Application Details

Application Notes: CPEB2 antibody can be used for detection of CPEB2 by ELISA at 1:62500. CPEB2 antibody can be used for detection of CPEB2 by western blot at 0.5 µg/mL, and HRP conjugated secondary antibody should be diluted 1:50,000 - 100,000.

Restrictions: For Research Use only

Handling

Format: Lyophilized

Reconstitution: Add 50 µL of distilled water. Final antibody concentration is 1 mg/mL.

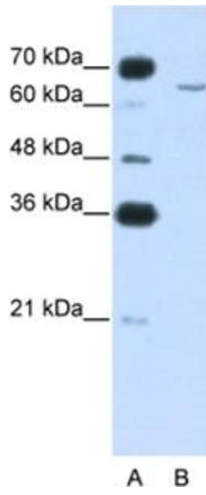
Concentration: 1 mg/mL

Buffer: Antibody is lyophilized in PBS buffer with 2 % sucrose.

Handling Advice: As with any antibody avoid repeat freeze-thaw cycles.

Storage: 4 °C/-20 °C

Storage Comment: For short periods of storage (days) store at 4 °C. For longer periods of storage, store CPEB2 antibody at -20 °C.



Western Blotting

Image 1.