



## Datasheet for ABIN2462384 anti-WDR13 antibody



[Go to Product page](#)

### 1 Image

#### Overview

Quantity:	100 µL
Target:	WDR13
Reactivity:	Human, Mouse, Rat, Dog
Host:	Rabbit
Clonality:	Polyclonal
Conjugate:	This WDR13 antibody is un-conjugated
Application:	ELISA, Western Blotting (WB)

#### Product Details

Immunogen:	Antibody produced in rabbits immunized with a synthetic peptide corresponding a region of human WDR13.
Purification:	Antibody is purified by protein A chromatography method.

#### Target Details

Target:	WDR13
Alternative Name:	WDR13 ( <a href="#">WDR13 Products</a> )
Background:	WDR13 is a member of the WD repeat protein family. WD repeats are minimally conserved regions of approximately 40 amino acids typically bracketed by gly-his and trp-asp (GH-WD), which may facilitate formation of heterotrimeric or multiprotein complexes. Members of this family are involved in a variety of cellular processes, including cell cycle progression, signal transduction, apoptosis, and gene regulation. WDR13 gene is widely expressed in various

## Target Details

---

tissues, and located in chromosome X. The function of this gene has not been determined. This gene encodes a member of the WD repeat protein family. WD repeats are minimally conserved regions of approximately 40 amino acids typically bracketed by gly-his and trp-asp (GH-WD), which may facilitate formation of heterotrimeric or multiprotein complexes. Members of this family are involved in a variety of cellular processes, including cell cycle progression, signal transduction, apoptosis, and gene regulation. This gene is widely expressed in various tissues, and located in chromosome X. The function of this gene has not been determined.

Molecular Weight: 53 kDa

Gene ID: 64743

NCBI Accession: [NP\\_060353](#)

UniProt: [Q9H1Z4](#)

## Application Details

---

Application Notes: WDR13 antibody can be used for detection of WDR13 by ELISA at 1:62500. WDR13 antibody can be used for detection of WDR13 by western blot at 1.25 µg/mL, and HRP conjugated secondary antibody should be diluted 1:50,000 - 100,000.

Restrictions: For Research Use only

## Handling

---

Format: Lyophilized

Reconstitution: Add 100 µL of distilled water. Final antibody concentration is 1 mg/mL.

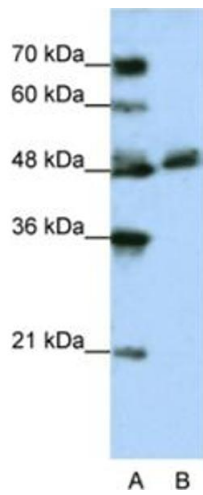
Concentration: 1 mg/mL

Buffer: Antibody is lyophilized in PBS buffer with 2 % sucrose.

Handling Advice: As with any antibody avoid repeat freeze-thaw cycles.

Storage: 4 °C/-20 °C

Storage Comment: For short periods of storage (days) store at 4 °C. For longer periods of storage, store WDR13 antibody at -20 °C.



### Western Blotting

Image 1.