

Datasheet for ABIN2462441

anti-GGTLC1 antibody[Go to Product page](#)**1** Image

Overview

Quantity:	100 µL
Target:	GGTLC1
Reactivity:	Human, Dog, Mouse, Rat
Host:	Rabbit
Clonality:	Polyclonal
Conjugate:	This GGTLC1 antibody is un-conjugated
Application:	ELISA, Immunohistochemistry (IHC), Western Blotting (WB)

Product Details

Immunogen:	Antibody produced in rabbits immunized with a synthetic peptide corresponding a region of human GGTLA4.
Purification:	Antibody is purified by protein A chromatography method.

Target Details

Target:	GGTLC1
Alternative Name:	GGTLA4 (GGTLC1 Products)
Background:	Gamma-glutamyl transpeptidase is a membrane-bound protein that is important in the metabolism of glutathione. The protein is similar in sequence to several members of the gamma-glutamyl transpeptidase family. Gamma-glutamyl transpeptidase is a membrane-bound protein that is important in the metabolism of glutathione. The protein encoded by this gene is similar in sequence to several members of the gamma-glutamyl transpeptidase family. Three

Target Details

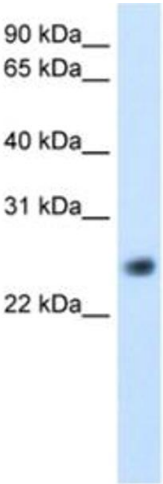
	transcript variants encoding the same protein have been found for this gene.
Molecular Weight:	25 kDa, 61 kDa, 61 kDa, 61 kDa, 61 kDa, 24 kDa, 24 kDa, 27 kDa, 24 kDa, 27 kDa, 24 kDa, 62 kDa, 62 kDa, 62 kDa
Gene ID:	92086
NCBI Accession:	NP_563577
UniProt:	Q9BX51

Application Details

Application Notes:	GGTLA4 antibody can be used for detection of GGTLA4 by ELISA at 1:312500. GGTLA4 antibody can be used for detection of GGTLA4 by western blot at 5.0 µg/mL, and HRP conjugated secondary antibody should be diluted 1:50,000 - 100,000.
Restrictions:	For Research Use only

Handling

Format:	Lyophilized
Reconstitution:	Add 100 µL of distilled water. Final antibody concentration is 1 mg/mL.
Concentration:	1 mg/mL
Buffer:	Antibody is lyophilized in PBS buffer with 2 % sucrose.
Handling Advice:	As with any antibody avoid repeat freeze-thaw cycles.
Storage:	4 °C/-20 °C
Storage Comment:	For short periods of storage (days) store at 4 °C. For longer periods of storage, store GGTLA4 antibody at -20 °C.



Western Blotting

Image 1.