



Datasheet for ABIN2462485 anti-CYP4A22 antibody



[Go to Product page](#)

1 Image

Overview

Quantity:	100 µL
Target:	CYP4A22
Reactivity:	Human
Host:	Rabbit
Clonality:	Polyclonal
Conjugate:	This CYP4A22 antibody is un-conjugated
Application:	Western Blotting (WB), Immunohistochemistry (IHC), ELISA

Product Details

Immunogen:	Antibody produced in rabbits immunized with a synthetic peptide corresponding a region of human CYP4A22.
Purification:	Antibody is purified by peptide affinity chromatography method.

Target Details

Target:	CYP4A22
Alternative Name:	CYP4A22 (CYP4A22 Products)
Background:	CYP4A22 is a member of the cytochrome P450 superfamily of enzymes. The cytochrome P450 proteins are monooxygenases which catalyze many reactions involved in drug metabolism and synthesis of cholesterol, steroids and other lipids. This gene encodes a member of the cytochrome P450 superfamily of enzymes. The cytochrome P450 proteins are monooxygenases which catalyze many reactions involved in drug metabolism and synthesis of

Target Details

cholesterol, steroids and other lipids. This gene is part of a cluster of cytochrome P450 genes on chromosome 1p33.

Molecular Weight: 57 kDa

Gene ID: 284541

NCBI Accession: [NP_001010969](#)

UniProt: [Q5TCH4](#)

Pathways: [Regulation of Lipid Metabolism by PPARalpha](#), [Monocarboxylic Acid Catabolic Process](#)

Application Details

Application Notes: CYP4A22 antibody can be used for detection of CYP4A22 by ELISA at 1:312500. CYP4A22 antibody can be used for detection of CYP4A22 by western blot at 0.25 µg/mL, and HRP conjugated secondary antibody should be diluted 1:50,000 - 100,000.

Restrictions: For Research Use only

Handling

Format: Lyophilized

Reconstitution: Add 50 µL of distilled water. Final antibody concentration is 1 mg/mL.

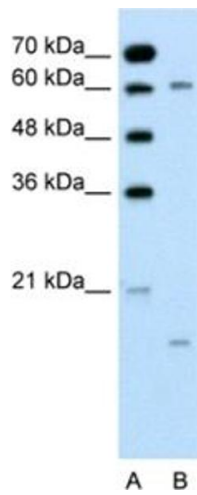
Concentration: 1 mg/mL

Buffer: Antibody is lyophilized in PBS buffer with 2 % sucrose.

Handling Advice: As with any antibody avoid repeat freeze-thaw cycles.

Storage: 4 °C/-20 °C

Storage Comment: For short periods of storage (days) store at 4 °C. For longer periods of storage, store CYP4A22 antibody at -20 °C.



Western Blotting

Image 1.