

Datasheet for ABIN2462536

anti-MTMR1 antibody[Go to Product page](#)**1** Image

Overview

Quantity:	100 µL
Target:	MTMR1
Reactivity:	Human, Mouse
Host:	Rabbit
Clonality:	Polyclonal
Conjugate:	This MTMR1 antibody is un-conjugated
Application:	Western Blotting (WB), ELISA

Product Details

Immunogen:	Antibody produced in rabbits immunized with a synthetic peptide corresponding a region of human MTMR1.
Purification:	Antibody is purified by protein A chromatography method.

Target Details

Target:	MTMR1
Alternative Name:	MTMR1 (MTMR1 Products)
Background:	<p>MTMR1 is a member of the myotubularin related family of proteins. Members of this family contain the consensus sequence for the active site of protein tyrosine phosphatases. This gene encodes a member of the myotubularin related family of proteins. Members of this family contain the consensus sequence for the active site of protein tyrosine phosphatases.</p> <p>Alternatively spliced variants have been described but their biological validity has not been</p>

Target Details

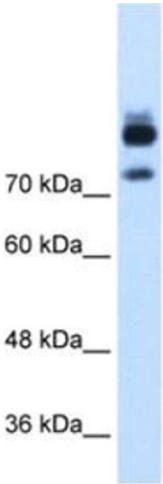
	determined.
Molecular Weight:	73 kDa
Gene ID:	8776
NCBI Accession:	NP_003819
UniProt:	Q13613
Pathways:	Inositol Metabolic Process

Application Details

Application Notes:	MTMR1 antibody can be used for detection of MTMR1 by ELISA at 1:312500. MTMR1 antibody can be used for detection of MTMR1 by western blot at 1.25 µg/mL, and HRP conjugated secondary antibody should be diluted 1:50,000 - 100,000.
Restrictions:	For Research Use only

Handling

Format:	Lyophilized
Reconstitution:	Add 100 µL of distilled water. Final antibody concentration is 1 mg/mL.
Concentration:	1 mg/mL
Buffer:	Antibody is lyophilized in PBS buffer with 2 % sucrose.
Handling Advice:	As with any antibody avoid repeat freeze-thaw cycles.
Storage:	4 °C/-20 °C
Storage Comment:	For short periods of storage (days) store at 4 °C. For longer periods of storage, store MTMR1 antibody at -20 °C.



Western Blotting

Image 1.