

Datasheet for ABIN2462577
anti-METTL7A antibody



[Go to Product page](#)

1 Image

Overview

Quantity:	100 µL
Target:	METTL7A
Reactivity:	Human, Rat
Host:	Rabbit
Clonality:	Polyclonal
Conjugate:	This METTL7A antibody is un-conjugated
Application:	ELISA, Western Blotting (WB)

Product Details

Immunogen:	Antibody produced in rabbits immunized with a synthetic peptide corresponding a region of human METTL7A.
Purification:	Antibody is purified by protein A chromatography method.

Target Details

Target:	METTL7A
Alternative Name:	METTL7A (METTL7A Products)
Background:	The function remains unknown.
Molecular Weight:	20 kDa
Gene ID:	25840
UniProt:	Q9H8H3

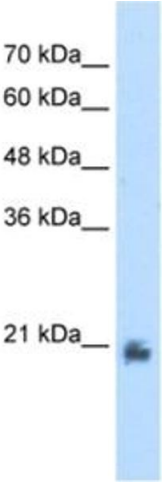
Application Details

Application Notes:	METTL7A antibody can be used for detection of METTL7A by ELISA at 1:312500. METTL7A antibody can be used for detection of METTL7A by western blot at 2.5 µg/mL, and HRP conjugated secondary antibody should be diluted 1:50,000 - 100,000.
Restrictions:	For Research Use only

Handling

Format:	Lyophilized
Reconstitution:	Add 100 µL of distilled water. Final antibody concentration is 1 mg/mL.
Concentration:	1 mg/mL
Buffer:	Antibody is lyophilized in PBS buffer with 2 % sucrose.
Handling Advice:	As with any antibody avoid repeat freeze-thaw cycles.
Storage:	4 °C/-20 °C
Storage Comment:	For short periods of storage (days) store at 4 °C. For longer periods of storage, store METTL7A antibody at -20 °C.

Images



Western Blotting

Image 1.