

Datasheet for ABIN2462588

anti-BPIFA1 antibody

1 Image

[Go to Product page](#)

Overview

Quantity:	100 µL
Target:	BPIFA1
Reactivity:	Human, Rat, Mouse, Dog
Host:	Rabbit
Clonality:	Polyclonal
Application:	Western Blotting (WB), ELISA

Product Details

Immunogen:	Antibody produced in rabbits immunized with a synthetic peptide corresponding a region of human PLUNC.
Purification:	Antibody is purified by peptide affinity chromatography method.

Target Details

Target:	BPIFA1
Alternative Name:	PLUNC (BPIFA1 Products)
Background:	PLUNC is the human homolog of murine plunc and is specifically expressed in the upper airways and nasopharyngeal regions. The exact biological function of this protein is not known, however, it has been suggested to be involved in inflammatory responses to irritants in the upper airways. It may also serve as a potential molecular marker for detection of micrometastasis in non-small-cell lung cancer. This gene is the human homolog of murine plunc, and like the mouse gene, is specifically expressed in the upper airways and nasopharyngeal regions. The exact biological function of this gene is not known, however, it has

Target Details

been suggested to be involved in inflammatory responses to irritants in the upper airways. It may also serve as a potential molecular marker for detection of micrometastasis in non-small-cell lung cancer. Multiple transcript variants resulting from alternative splicing in the 3' UTR have been detected, but the full-length nature of only two is known.

Molecular Weight: 28 kDa, 27 kDa

Gene ID: 51297

NCBI Accession: [NP_057667](#)

UniProt: [Q9NP55](#)

Application Details

Application Notes: PLUNC antibody can be used for detection of PLUNC by ELISA at 1:1562500. PLUNC antibody can be used for detection of PLUNC by western blot at 0.25 µg/mL, and HRP conjugated secondary antibody should be diluted 1:50,000 - 100,000.

Restrictions: For Research Use only

Handling

Format: Lyophilized

Reconstitution: Add 50 µL of distilled water. Final antibody concentration is 1 mg/mL.

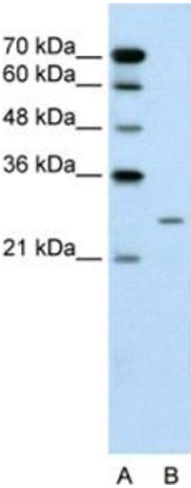
Concentration: 1 mg/mL

Buffer: Antibody is lyophilized in PBS buffer with 2 % sucrose.

Handling Advice: As with any antibody avoid repeat freeze-thaw cycles.

Storage: 4 °C/-20 °C

Storage Comment: For short periods of storage (days) store at 4 °C. For longer periods of storage, store PLUNC antibody at -20 °C.



Western Blotting

Image 1.