

Datasheet for ABIN2462596

anti-SLC38A4 antibody[Go to Product page](#)**1** Image

Overview

Quantity:	100 µL
Target:	SLC38A4
Reactivity:	Human, Mouse, Rat, Dog, Zebrafish (Danio rerio), C. elegans, Drosophila melanogaster
Host:	Rabbit
Clonality:	Polyclonal
Conjugate:	This SLC38A4 antibody is un-conjugated
Application:	Western Blotting (WB), ELISA, Immunohistochemistry (IHC)

Product Details

Immunogen:	Antibody produced in rabbits immunized with a synthetic peptide corresponding a region of human SLC38A4.
Purification:	Antibody is purified by protein A chromatography method.

Target Details

Target:	SLC38A4
Alternative Name:	SLC38A4 (SLC38A4 Products)
Background:	SLC38A4 is found predominantly in liver and transports both cationic and neutral amino acids. The transport of cationic amino acids by SLC38A4 is Na (+) and pH independent, while the transport of neutral amino acids is Na (+) and pH dependent. The modification of proteins with ubiquitin is an important cellular mechanism for targeting abnormal or short-lived proteins for degradation. Ubiquitination involves at least three classes of enzymes: ubiquitin-activating

Target Details

enzymes, or E1s, ubiquitin-conjugating enzymes, or E2s, and ubiquitin-protein ligases, or E3s.

This gene encodes a member of the E2 ubiquitin-conjugating enzyme family. Four alternatively spliced transcript variants encoding the same protein have been found for this gene.

Molecular Weight: 17 kDa, 18 kDa, 18 kDa, 18 kDa, 18 kDa

Gene ID: 55089

NCBI Accession: [NP_060488](#)

UniProt: [Q96916](#)

Application Details

Application Notes: SLC38A4 antibody can be used for detection of SLC38A4 by ELISA at 1:312500. SLC38A4 antibody can be used for detection of SLC38A4 by western blot at 2.5 µg/mL, and HRP conjugated secondary antibody should be diluted 1:50,000 - 100,000.

Restrictions: For Research Use only

Handling

Format: Lyophilized

Reconstitution: Add 100 µL of distilled water. Final antibody concentration is 1 mg/mL.

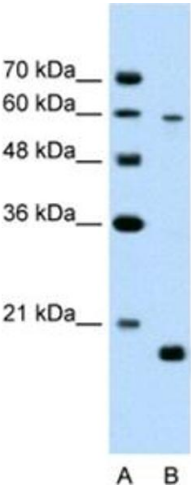
Concentration: 1 mg/mL

Buffer: Antibody is lyophilized in PBS buffer with 2 % sucrose.

Handling Advice: As with any antibody avoid repeat freeze-thaw cycles.

Storage: 4 °C/-20 °C

Storage Comment: For short periods of storage (days) store at 4 °C. For longer periods of storage, store SLC38A4 antibody at -20 °C.



Western Blotting

Image 1.