



## Datasheet for ABIN2462597 anti-BSDC1 antibody



[Go to Product page](#)

### 1 Image

#### Overview

Quantity:	100 µL
Target:	BSDC1
Reactivity:	Human, Mouse, Dog, Rat, Zebrafish (Danio rerio)
Host:	Rabbit
Clonality:	Polyclonal
Conjugate:	This BSDC1 antibody is un-conjugated
Application:	Western Blotting (WB), ELISA, Immunohistochemistry (IHC)

#### Product Details

Immunogen:	Antibody produced in rabbits immunized with a synthetic peptide corresponding a region of human BSDC1.
Purification:	Antibody is purified by protein A chromatography method.

#### Target Details

Target:	BSDC1
Alternative Name:	BSDC1 ( <a href="#">BSDC1 Products</a> )
Background:	<p>The function remains unknown. The modification of proteins with ubiquitin is an important cellular mechanism for targeting abnormal or short-lived proteins for degradation. Ubiquitination involves at least three classes of enzymes: ubiquitin-activating enzymes (E1s), ubiquitin-conjugating enzymes (E2s) and ubiquitin-protein ligases (E3s). This gene encodes a member of the E2 ubiquitin-conjugating enzyme family. This enzyme is demonstrated to</p>

## Target Details

---

participate in the ubiquitination of p53, c-Fos, and the NF- $\kappa$ B precursor p105 in vitro. Two alternatively spliced transcript variants encoding distinct isoforms have been found for this gene.

Molecular Weight: 17 kDa, 18 kDa

Gene ID: 55108

NCBI Accession: [NP\\_060515](#)

## Application Details

---

Application Notes: BSDC1 antibody can be used for detection of BSDC1 by ELISA at 1:312500. BSDC1 antibody can be used for detection of BSDC1 by western blot at 2.5  $\mu$ g/mL, and HRP conjugated secondary antibody should be diluted 1:50,000 - 100,000.

Restrictions: For Research Use only

## Handling

---

Format: Lyophilized

Reconstitution: Add 100  $\mu$ L of distilled water. Final antibody concentration is 1 mg/mL.

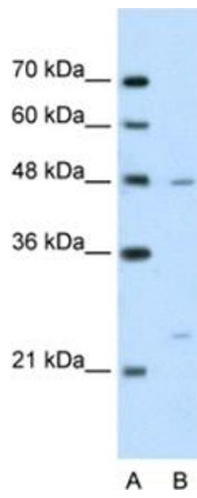
Concentration: 1 mg/mL

Buffer: Antibody is lyophilized in PBS buffer with 2 % sucrose.

Handling Advice: As with any antibody avoid repeat freeze-thaw cycles.

Storage: 4  $^{\circ}$ C/-20  $^{\circ}$ C

Storage Comment: For short periods of storage (days) store at 4  $^{\circ}$ C. For longer periods of storage, store BSDC1 antibody at -20  $^{\circ}$ C.



### Western Blotting

Image 1.