

Datasheet for ABIN2462598

anti-LRP2BP antibody[Go to Product page](#)**1** Image

Overview

Quantity:	100 µL
Target:	LRP2BP
Reactivity:	Human, Rat, Dog, Mouse
Host:	Rabbit
Clonality:	Polyclonal
Conjugate:	This LRP2BP antibody is un-conjugated
Application:	Western Blotting (WB), ELISA

Product Details

Immunogen:	Antibody produced in rabbits immunized with a synthetic peptide corresponding a region of human LRP2BP.
Purification:	Antibody is purified by peptide affinity chromatography method.

Target Details

Target:	LRP2BP
Alternative Name:	LRP2BP (LRP2BP Products)
Background:	The function remains unknown.
Molecular Weight:	38 kDa
Gene ID:	55805
NCBI Accession:	NP_060879

Target Details

UniProt: [A6NJR7](#)

Application Details

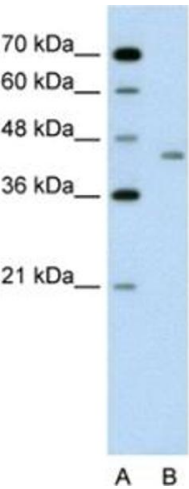
Application Notes: LRP2BP antibody can be used for detection of LRP2BP by ELISA at 1:12500. LRP2BP antibody can be used for detection of LRP2BP by western blot at 1.0 µg/mL, and HRP conjugated secondary antibody should be diluted 1:50,000 - 100,000.

Restrictions: For Research Use only

Handling

Format:	Lyophilized
Reconstitution:	Add 50 µL of distilled water. Final antibody concentration is 1 mg/mL.
Concentration:	1 mg/mL
Buffer:	Antibody is lyophilized in PBS buffer with 2 % sucrose.
Handling Advice:	As with any antibody avoid repeat freeze-thaw cycles.
Storage:	4 °C/-20 °C
Storage Comment:	For short periods of storage (days) store at 4 °C. For longer periods of storage, store LRP2BP antibody at -20 °C.

Images



Western Blotting

Image 1.