

Datasheet for ABIN2462654
anti-FKBP6 antibody



[Go to Product page](#)

1 Image

Overview

Quantity:	100 µL
Target:	FKBP6
Reactivity:	Human, Mouse, Rat, Dog
Host:	Rabbit
Clonality:	Polyclonal
Conjugate:	This FKBP6 antibody is un-conjugated
Application:	Western Blotting (WB), ELISA, Immunohistochemistry (IHC)

Product Details

Immunogen:	Antibody produced in rabbits immunized with a synthetic peptide corresponding a region of human FKBP6.
Purification:	Antibody is purified by protein A chromatography method.

Target Details

Target:	FKBP6
Alternative Name:	FKBP6 (FKBP6 Products)
Background:	FKBP6 is a member of the immunophilin protein family, which play a role in immunoregulation and basic cellular processes involving protein folding and trafficking. FKBP6 is a cis-trans prolyl isomerase that binds to the immunosuppressants FK506 and rapamycin. This gene encodes a member of the interferon regulatory transcription factor (IRF) family. Family members share a highly-conserved N-terminal helix-turn-helix DNA-binding domain and a less conserved C-

Target Details

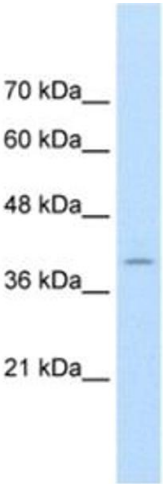
	terminal protein-binding domain. Mutations in this gene can cause van der Woude syndrome and popliteal pterygium syndrome. This protein is involved in palate formation.
Molecular Weight:	53 kDa, 53 kDa
Gene ID:	8468
NCBI Accession:	NP_003593
UniProt:	O75344
Pathways:	M Phase

Application Details

Application Notes:	FKBP6 antibody can be used for detection of FKBP6 by ELISA at 1:1562500. FKBP6 antibody can be used for detection of FKBP6 by western blot at 1.25 µg/mL, and HRP conjugated secondary antibody should be diluted 1:50,000 - 100,000.
Restrictions:	For Research Use only

Handling

Format:	Lyophilized
Reconstitution:	Add 100 µL of distilled water. Final antibody concentration is 1 mg/mL.
Concentration:	1 mg/mL
Buffer:	Antibody is lyophilized in PBS buffer with 2 % sucrose.
Handling Advice:	As with any antibody avoid repeat freeze-thaw cycles.
Storage:	4 °C/-20 °C
Storage Comment:	For short periods of storage (days) store at 4 °C. For longer periods of storage, store FKBP6 antibody at -20 °C.



Western Blotting

Image 1.