

Datasheet for ABIN2462657
anti-RAPSN antibody



[Go to Product page](#)

1 Image

Overview

Quantity:	100 µL
Target:	RAPSN
Reactivity:	Human, Mouse, Rat, Dog
Host:	Rabbit
Clonality:	Polyclonal
Conjugate:	This RAPSN antibody is un-conjugated
Application:	Western Blotting (WB), ELISA

Product Details

Immunogen:	Antibody produced in rabbits immunized with a synthetic peptide corresponding a region of human RAPSN.
Purification:	Antibody is purified by peptide affinity chromatography method.

Target Details

Target:	RAPSN
Alternative Name:	RAPSN (RAPSN Products)
Background:	RAPSN belongs to a family of proteins that are receptor associated proteins of the synapse. It contains a conserved cAMP-dependent protein kinase phosphorylation site. It is believed to play some role in anchoring or stabilizing the nicotinic acetylcholine receptor at synaptic sites. It may link the receptor to the underlying postsynaptic cytoskeleton, possibly by direct association with actin or spectrin. This protein belongs to a family of proteins that are receptor

Target Details

associated proteins of the synapse. It contains a conserved cAMP-dependent protein kinase phosphorylation site. It is believed to play some role in anchoring or stabilizing the nicotinic acetylcholine receptor at synaptic sites. It may link the receptor to the underlying postsynaptic cytoskeleton, possibly by direct association with actin or spectrin. Two splice variants have been identified for this gene.

Molecular Weight: 39 kDa, 46 kDa

Gene ID: 5913

NCBI Accession: [NP_116034](#)

Application Details

Application Notes: RAPSN antibody can be used for detection of RAPSN by ELISA at 1:312500. RAPSN antibody can be used for detection of RAPSN by western blot at 0.25 µg/mL, and HRP conjugated secondary antibody should be diluted 1:50,000 - 100,000.

Restrictions: For Research Use only

Handling

Format: Lyophilized

Reconstitution: Add 50 µL of distilled water. Final antibody concentration is 1 mg/mL.

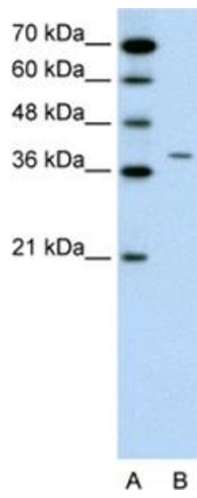
Concentration: 1 mg/mL

Buffer: Antibody is lyophilized in PBS buffer with 2 % sucrose.

Handling Advice: As with any antibody avoid repeat freeze-thaw cycles.

Storage: 4 °C/-20 °C

Storage Comment: For short periods of storage (days) store at 4 °C. For longer periods of storage, store RAPSN antibody at -20 °C.



Western Blotting

Image 1.