



Datasheet for ABIN2462728
anti-LOC342293 antibody



[Go to Product page](#)

1 Image

Overview

Quantity:	100 µL
Target:	LOC342293
Reactivity:	Human
Host:	Rabbit
Clonality:	Polyclonal
Conjugate:	This LOC342293 antibody is un-conjugated
Application:	Immunohistochemistry (IHC), Western Blotting (WB), ELISA

Product Details

Immunogen:	Antibody produced in rabbits immunized with a synthetic peptide corresponding a region of human LOC342293.
Purification:	Antibody is purified by protein A chromatography method.

Target Details

Target:	LOC342293
Alternative Name:	LOC342293 (LOC342293 Products)
Background:	The function remains unknown.
Molecular Weight:	29 kDa, 31 kDa
Gene ID:	342293
NCBI Accession:	XP_942044

Application Details

Application Notes: LOC342293 antibody can be used for detection of LOC342293 by ELISA at 1:1562500.
LOC342293 antibody can be used for detection of LOC342293 by western blot at 1.25 µg/mL, and HRP conjugated secondary antibody should be diluted 1:50,000 - 100,000.

Restrictions: For Research Use only

Handling

Format: Lyophilized

Reconstitution: Add 100 µL of distilled water. Final antibody concentration is 1 mg/mL.

Concentration: 1 mg/mL

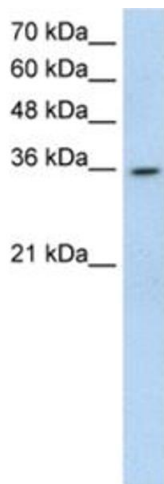
Buffer: Antibody is lyophilized in PBS buffer with 2 % sucrose.

Handling Advice: As with any antibody avoid repeat freeze-thaw cycles.

Storage: 4 °C/-20 °C

Storage Comment: For short periods of storage (days) store at 4 °C. For longer periods of storage, store LOC342293 antibody at -20 °C.

Images



Western Blotting

Image 1.