



[Go to Product page](#)

Datasheet for ABIN2462731
anti-SLC10A5 antibody

1 Image

Overview

Quantity:	100 µL
Target:	SLC10A5
Reactivity:	Human
Host:	Rabbit
Clonality:	Polyclonal
Conjugate:	This SLC10A5 antibody is un-conjugated
Application:	Western Blotting (WB), Immunohistochemistry (IHC), ELISA

Product Details

Immunogen:	Antibody produced in rabbits immunized with a synthetic peptide corresponding a region of human SLC10A5.
Purification:	Antibody is purified by protein A chromatography method.

Target Details

Target:	SLC10A5
Alternative Name:	SLC10A5 (SLC10A5 Products)
Background:	SLC10A5 is a new member of Solute Carrier Family 10 (SLC10) and the function remains unknown.
Molecular Weight:	48 kDa
Gene ID:	347051

Target Details

NCBI Accession: [NP_001010893](#)

UniProt: [Q5PT55](#)

Application Details

Application Notes: SLC10A5 antibody can be used for detection of SLC10A5 by ELISA at 1:312500. SLC10A5 antibody can be used for detection of SLC10A5 by western blot at 1.25 µg/mL, and HRP conjugated secondary antibody should be diluted 1:50,000 - 100,000.

Restrictions: For Research Use only

Handling

Format: Lyophilized

Reconstitution: Add 100 µL of distilled water. Final antibody concentration is 1 mg/mL.

Concentration: 1 mg/mL

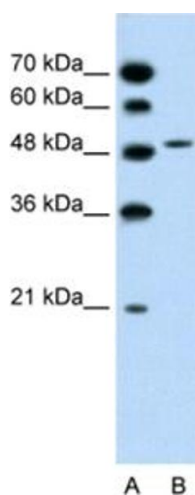
Buffer: Antibody is lyophilized in PBS buffer with 2 % sucrose.

Handling Advice: As with any antibody avoid repeat freeze-thaw cycles.

Storage: 4 °C/-20 °C

Storage Comment: For short periods of storage (days) store at 4 °C. For longer periods of storage, store SLC10A5 antibody at -20 °C.

Images



Western Blotting

Image 1.