

Datasheet for ABIN2462734
anti-SLC25A45 antibody[Go to Product page](#)

1 Image

Overview

Quantity:	100 µL
Target:	SLC25A45
Reactivity:	Human
Host:	Rabbit
Clonality:	Polyclonal
Conjugate:	This SLC25A45 antibody is un-conjugated
Application:	Western Blotting (WB), ELISA, Immunohistochemistry (IHC)

Product Details

Immunogen:	Antibody produced in rabbits immunized with a synthetic peptide corresponding a region of human LOC283130.
Purification:	Antibody is purified by protein A chromatography method.

Target Details

Target:	SLC25A45
Alternative Name:	LOC283130 (SLC25A45 Products)
Background:	The function remains unknown.
Molecular Weight:	27 kDa, 32 kDa
Gene ID:	283130
NCBI Accession:	NP_001070709

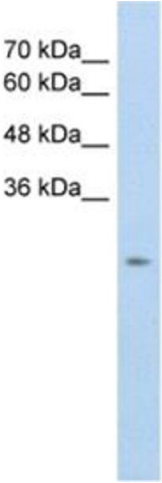
Application Details

Application Notes:	LOC283130 antibody can be used for detection of LOC283130 by ELISA at 1:1562500. LOC283130 antibody can be used for detection of LOC283130 by western blot at 5.0 µg/mL, and HRP conjugated secondary antibody should be diluted 1:50,000 - 100,000.
Restrictions:	For Research Use only

Handling

Format:	Lyophilized
Reconstitution:	Add 100 µL of distilled water. Final antibody concentration is 1 mg/mL.
Concentration:	1 mg/mL
Buffer:	Antibody is lyophilized in PBS buffer with 2 % sucrose.
Handling Advice:	As with any antibody avoid repeat freeze-thaw cycles.
Storage:	4 °C/-20 °C
Storage Comment:	For short periods of storage (days) store at 4 °C. For longer periods of storage, store LOC283130 antibody at -20 °C.

Images



Western Blotting

Image 1.