

Datasheet for ABIN2462743
anti-SLC25A14 antibody[Go to Product page](#)

1 Image

Overview

Quantity:	100 µL
Target:	SLC25A14
Reactivity:	Human, Mouse, Rat, Dog
Host:	Rabbit
Clonality:	Polyclonal
Conjugate:	This SLC25A14 antibody is un-conjugated
Application:	ELISA, Western Blotting (WB), Immunohistochemistry (IHC)

Product Details

Immunogen:	Antibody produced in rabbits immunized with a synthetic peptide corresponding a region of human SLC25A14.
Purification:	Antibody is purified by protein A chromatography method.

Target Details

Target:	SLC25A14
Alternative Name:	SLC25A14 (SLC25A14 Products)
Background:	Mitochondrial uncoupling proteins (UCP) are members of the larger family of mitochondrial anion carrier proteins (MACP). UCPs separate oxidative phosphorylation from ATP synthesis with energy dissipated as heat, also referred to as the mitochondrial proton leak. UCPs facilitate the transfer of anions from the inner to the outer mitochondrial membrane and the return transfer of protons from the outer to the inner mitochondrial membrane. They also reduce the

Target Details

mitochondrial membrane potential in mammalian cells. Tissue specificity occurs for the different UCPs and the exact methods of how UCPs transfer H⁺/OH⁻ are not known. UCPs contain the three homologous protein domains of MACPs. SLC25A14 has an N-terminal hydrophobic domain that is not present in other UCPs.

Molecular Weight: 21 kDa, 36 kDa, 36 kDa

Gene ID: 9016

UniProt: [Q5JY88](#)

Pathways: [Proton Transport](#)

Application Details

Application Notes: SLC25A14 antibody can be used for detection of SLC25A14 by ELISA at 1:62500. SLC25A14 antibody can be used for detection of SLC25A14 by western blot at 2.5 µg/mL, and HRP conjugated secondary antibody should be diluted 1:50,000 - 100,000.

Restrictions: For Research Use only

Handling

Format: Lyophilized

Reconstitution: Add 100 µL of distilled water. Final antibody concentration is 1 mg/mL.

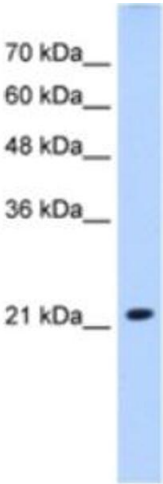
Concentration: 1 mg/mL

Buffer: Antibody is lyophilized in PBS buffer with 2 % sucrose.

Handling Advice: As with any antibody avoid repeat freeze-thaw cycles.

Storage: 4 °C/-20 °C

Storage Comment: For short periods of storage (days) store at 4 °C. For longer periods of storage, store SLC25A14 antibody at -20 °C.



Western Blotting

Image 1.