

Datasheet for ABIN2462748

anti-SLC35A3 antibody[Go to Product page](#)**1** Image

Overview

Quantity:	100 µL
Target:	SLC35A3
Reactivity:	Human
Host:	Rabbit
Clonality:	Polyclonal
Conjugate:	This SLC35A3 antibody is un-conjugated
Application:	Western Blotting (WB), ELISA

Product Details

Immunogen:	Antibody produced in rabbits immunized with a synthetic peptide corresponding a region of human SLC35A3.
Purification:	Antibody is purified by peptide affinity chromatography method.

Target Details

Target:	SLC35A3
Alternative Name:	SLC35A3 (SLC35A3 Products)
Background:	SLC35A3 is a uridine diphosphate-N-acetylglucosamine transporter in the Golgi apparatus.
Molecular Weight:	36 kDa
Gene ID:	23443
NCBI Accession:	NP_036375

Target Details

UniProt: [Q9Y2D2](#)

Application Details

Application Notes: SLC35A3 antibody can be used for detection of SLC35A3 by ELISA at 1:12500. SLC35A3 antibody can be used for detection of SLC35A3 by western blot at 0.5 µg/mL, and HRP conjugated secondary antibody should be diluted 1:50,000 - 100,000.

Restrictions: For Research Use only

Handling

Format: Lyophilized

Reconstitution: Add 50 µL of distilled water. Final antibody concentration is 1 mg/mL.

Concentration: 1 mg/mL

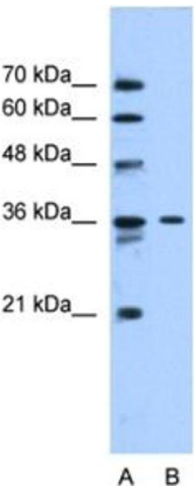
Buffer: Antibody is lyophilized in PBS buffer with 2 % sucrose.

Handling Advice: As with any antibody avoid repeat freeze-thaw cycles.

Storage: 4 °C/-20 °C

Storage Comment: For short periods of storage (days) store at 4 °C. For longer periods of storage, store SLC35A3 antibody at -20 °C.

Images



Western Blotting

Image 1.