

Datasheet for ABIN2462756  
**anti-SLC25A39 antibody**[Go to Product page](#)

## 1 Image

## Overview

Quantity:	100 µL
Target:	SLC25A39
Reactivity:	Human, Mouse, Dog, Rat
Host:	Rabbit
Clonality:	Polyclonal
Conjugate:	This SLC25A39 antibody is un-conjugated
Application:	Western Blotting (WB), Immunohistochemistry (IHC), ELISA

## Product Details

Immunogen:	Antibody produced in rabbits immunized with a synthetic peptide corresponding a region of human SLC25A39.
Purification:	Antibody is purified by peptide affinity chromatography method.

## Target Details

Target:	SLC25A39
Alternative Name:	SLC25A39 ( <a href="#">SLC25A39 Products</a> )
Background:	SLC25A39 is a member of the solute carrier family 25 and is known to transport molecules over the mitochondrial membrane.
Molecular Weight:	39 kDa
Gene ID:	51629

## Target Details

NCBI Accession: [NP\\_057100](#)

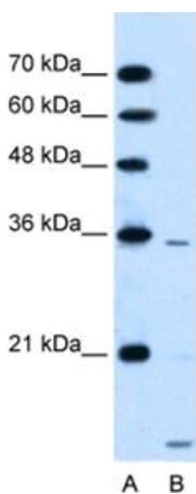
## Application Details

Application Notes:	SLC25A39 antibody can be used for detection of SLC25A39 by ELISA at 1:312500. SLC25A39 antibody can be used for detection of SLC25A39 by western blot at 0.5 µg/mL, and HRP conjugated secondary antibody should be diluted 1:50,000 - 100,000.
Restrictions:	For Research Use only

## Handling

Format:	Lyophilized
Reconstitution:	Add 50 µL of distilled water. Final antibody concentration is 1 mg/mL.
Concentration:	1 mg/mL
Buffer:	Antibody is lyophilized in PBS buffer with 2 % sucrose.
Handling Advice:	As with any antibody avoid repeat freeze-thaw cycles.
Storage:	4 °C/-20 °C
Storage Comment:	For short periods of storage (days) store at 4 °C. For longer periods of storage, store SLC25A39 antibody at -20 °C.

## Images



### Western Blotting

Image 1.