

Datasheet for ABIN2462765
anti-SLC26A1 antibody



[Go to Product page](#)

1 Image

Overview

Quantity:	100 µL
Target:	SLC26A1
Reactivity:	Human
Host:	Rabbit
Clonality:	Polyclonal
Conjugate:	This SLC26A1 antibody is un-conjugated
Application:	Immunohistochemistry (IHC), Western Blotting (WB), ELISA

Product Details

Immunogen:	Antibody produced in rabbits immunized with a synthetic peptide corresponding a region of human SLC26A1.
Purification:	Antibody is purified by peptide affinity chromatography method.

Target Details

Target:	SLC26A1
Alternative Name:	SLC26A1 (SLC26A1 Products)
Background:	SLC26A1 is a member of sulfate/anion transporter family. Family members are well conserved in their protein (aa length among species) structures, but have markedly different tissue expression patterns. Its gene is primarily expressed in the liver, pancreas, and brain. This gene is a member of a family of sulfate/anion transporter genes. Family members are well conserved in their genomic (number and size of exons) and protein (aa length among species) structures,

Target Details

but have markedly different tissue expression patterns. This gene is primarily expressed in the liver, pancreas, and brain. Three splice variants that encode different isoforms have been identified.

Molecular Weight:	77 kDa, 75 kDa
Gene ID:	10861
NCBI Accession:	NP_071325
UniProt:	Q9H2B4
Pathways:	Glycosaminoglycan Metabolic Process , Ribonucleoside Biosynthetic Process , Dicarboxylic Acid Transport

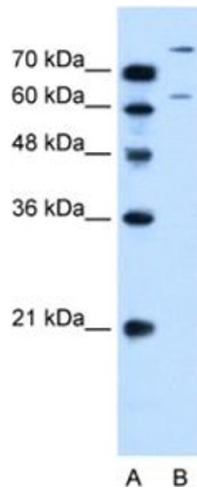
Application Details

Application Notes: SLC26A1 antibody can be used for detection of SLC26A1 by ELISA at 1:1562500. SLC26A1 antibody can be used for detection of SLC26A1 by western blot at 0.5 µg/mL, and HRP conjugated secondary antibody should be diluted 1:50,000 - 100,000.

Restrictions: For Research Use only

Handling

Format:	Lyophilized
Reconstitution:	Add 50 µL of distilled water. Final antibody concentration is 1 mg/mL.
Concentration:	1 mg/mL
Buffer:	Antibody is lyophilized in PBS buffer with 2 % sucrose.
Handling Advice:	As with any antibody avoid repeat freeze-thaw cycles.
Storage:	4 °C/-20 °C
Storage Comment:	For short periods of storage (days) store at 4 °C. For longer periods of storage, store SLC26A1 antibody at -20 °C.



Western Blotting

Image 1.