

Datasheet for ABIN2462767

anti-SLC35F5 antibody[Go to Product page](#)**1** Image

Overview

Quantity:	100 µL
Target:	SLC35F5
Reactivity:	Human, Mouse, Rat
Host:	Rabbit
Clonality:	Polyclonal
Conjugate:	This SLC35F5 antibody is un-conjugated
Application:	ELISA, Western Blotting (WB)

Product Details

Immunogen:	Antibody produced in rabbits immunized with a synthetic peptide corresponding a region of human SLC35F5.
Purification:	Antibody is purified by protein A chromatography method.

Target Details

Target:	SLC35F5
Alternative Name:	SLC35F5 (SLC35F5 Products)
Background:	SLC35F5 is a putative solute transporter.
Molecular Weight:	59 kDa
Gene ID:	80255
NCBI Accession:	NP_079457

Target Details

UniProt: [Q8WV83](#)

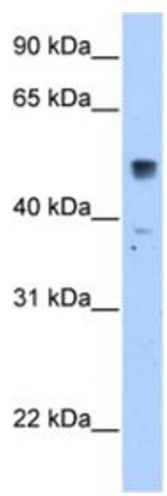
Application Details

Application Notes:	SLC35F5 antibody can be used for detection of SLC35F5 by ELISA at 1:1562500. SLC35F5 antibody can be used for detection of SLC35F5 by western blot at 2.5 µg/mL, and HRP conjugated secondary antibody should be diluted 1:50,000 - 100,000.
Restrictions:	For Research Use only

Handling

Format:	Lyophilized
Reconstitution:	Add 100 µL of distilled water. Final antibody concentration is 1 mg/mL.
Concentration:	1 mg/mL
Buffer:	Antibody is lyophilized in PBS buffer with 2 % sucrose.
Handling Advice:	As with any antibody avoid repeat freeze-thaw cycles.
Storage:	4 °C/-20 °C
Storage Comment:	For short periods of storage (days) store at 4 °C. For longer periods of storage, store SLC35F5 antibody at -20 °C.

Images



Western Blotting

Image 1.