

Datasheet for ABIN2462769  
**anti-SLC25A32 antibody**[Go to Product page](#)

## 1 Image

## Overview

Quantity:	100 µL
Target:	SLC25A32
Reactivity:	Human, Mouse, Rat, Dog
Host:	Rabbit
Clonality:	Polyclonal
Conjugate:	This SLC25A32 antibody is un-conjugated
Application:	ELISA, Western Blotting (WB)

## Product Details

Immunogen:	Antibody produced in rabbits immunized with a synthetic peptide corresponding a region of human SLC25A32.
Purification:	Antibody is purified by peptide affinity chromatography method.

## Target Details

Target:	SLC25A32
Alternative Name:	SLC25A32 ( <a href="#">SLC25A32 Products</a> )
Background:	SLC25A32 transports folate across the inner membranes of mitochondria.
Molecular Weight:	35 kDa
Gene ID:	81034
NCBI Accession:	<a href="#">NP_110407</a>

## Target Details

UniProt:	<a href="#">Q9H2D1</a>
Pathways:	<a href="#">Dicarboxylic Acid Transport</a>

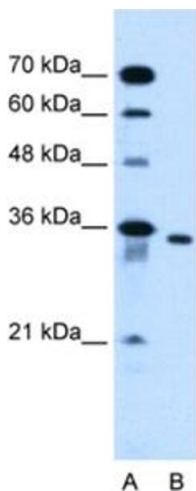
## Application Details

Application Notes:	SLC25A32 antibody can be used for detection of SLC25A32 by ELISA at 1:1562500. SLC25A32 antibody can be used for detection of SLC25A32 by western blot at 0.25 µg/mL, and HRP conjugated secondary antibody should be diluted 1:50,000 - 100,000.
Restrictions:	For Research Use only

## Handling

Format:	Lyophilized
Reconstitution:	Add 50 µL of distilled water. Final antibody concentration is 1 mg/mL.
Concentration:	1 mg/mL
Buffer:	Antibody is lyophilized in PBS buffer with 2 % sucrose.
Handling Advice:	As with any antibody avoid repeat freeze-thaw cycles.
Storage:	4 °C/-20 °C
Storage Comment:	For short periods of storage (days) store at 4 °C. For longer periods of storage, store SLC25A32 antibody at -20 °C.

## Images



### Western Blotting

Image 1.