



Datasheet for ABIN2462773

## anti-Solute Carrier Family 5 (Sodium/inositol Cotransporter), Member 11 (SLC5A11) antibody



[Go to Product page](#)

### 1 Image

#### Overview

Quantity:	100 µL
Target:	Solute Carrier Family 5 (Sodium/inositol Cotransporter), Member 11 (SLC5A11)
Reactivity:	Human, Mouse, Rat, Dog
Host:	Rabbit
Clonality:	Polyclonal
Conjugate:	Un-conjugated
Application:	ELISA, Western Blotting (WB)

#### Product Details

Immunogen:	Antibody produced in rabbits immunized with a synthetic peptide corresponding a region of human SLC5A11.
Purification:	Antibody is purified by peptide affinity chromatography method.

#### Target Details

Target:	Solute Carrier Family 5 (Sodium/inositol Cotransporter), Member 11 (SLC5A11)
Alternative Name:	SLC5A11 ( <a href="#">SLC5A11 Products</a> )
Background:	Cotransporters, such as SLC5A11, represent a major class of proteins that make use of ion gradients to drive active transport for the cellular accumulation of nutrients, neurotransmitters, osmolytes, and ions Roll et al.
Molecular Weight:	74 kDa
Gene ID:	115584

## Target Details

NCBI Accession: [NP\\_443176](#)

UniProt: [Q8WWX8](#)

## Application Details

Application Notes: SLC5A11 antibody can be used for detection of SLC5A11 by ELISA at 1:312500. SLC5A11 antibody can be used for detection of SLC5A11 by western blot at 1.0 µg/mL, and HRP conjugated secondary antibody should be diluted 1:50,000 - 100,000.

Restrictions: For Research Use only

## Handling

Format: Lyophilized

Reconstitution: Add 50 µL of distilled water. Final antibody concentration is 1 mg/mL.

Concentration: 1 mg/mL

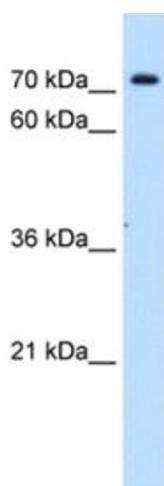
Buffer: Antibody is lyophilized in PBS buffer with 2 % sucrose.

Handling Advice: As with any antibody avoid repeat freeze-thaw cycles.

Storage: 4 °C/-20 °C

Storage Comment: For short periods of storage (days) store at 4 °C. For longer periods of storage, store SLC5A11 antibody at -20 °C.

## Images



### Western Blotting

Image 1.