

Datasheet for ABIN2462775
anti-SLC25A46 antibody[Go to Product page](#)

1 Image

Overview

Quantity:	100 µL
Target:	SLC25A46
Reactivity:	Human, Mouse, Rat, Zebrafish (Danio rerio)
Host:	Rabbit
Clonality:	Polyclonal
Conjugate:	This SLC25A46 antibody is un-conjugated
Application:	ELISA, Western Blotting (WB)

Product Details

Immunogen:	Antibody produced in rabbits immunized with a synthetic peptide corresponding a region of human SLC25A46.
Purification:	Antibody is purified by protein A chromatography method.

Target Details

Target:	SLC25A46
Alternative Name:	SLC25A46 (SLC25A46 Products)
Background:	SLC25A46 is a members of the solute carrier family 25 (SLC25) which is known to transport molecules over the mitochondrial membrane.
Molecular Weight:	46 kDa
Gene ID:	91137

Target Details

NCBI Accession: [NP_620128](#)

UniProt: [Q96AG3](#)

Application Details

Application Notes: SLC25A46 antibody can be used for detection of SLC25A46 by ELISA at 1:312500. SLC25A46 antibody can be used for detection of SLC25A46 by western blot at 5.0 µg/mL, and HRP conjugated secondary antibody should be diluted 1:50,000 - 100,000.

Restrictions: For Research Use only

Handling

Format: Lyophilized

Reconstitution: Add 100 µL of distilled water. Final antibody concentration is 1 mg/mL.

Concentration: 1 mg/mL

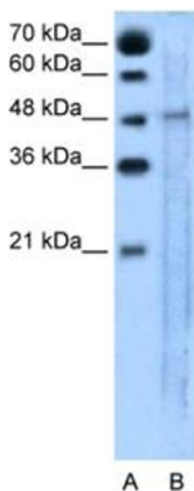
Buffer: Antibody is lyophilized in PBS buffer with 2 % sucrose.

Handling Advice: As with any antibody avoid repeat freeze-thaw cycles.

Storage: 4 °C/-20 °C

Storage Comment: For short periods of storage (days) store at 4 °C. For longer periods of storage, store SLC25A46 antibody at -20 °C.

Images



Western Blotting

Image 1.