

Datasheet for ABIN2462786

**anti-SLC6A18 antibody**[Go to Product page](#)**1** Image

## Overview

Quantity:	100 µL
Target:	SLC6A18
Reactivity:	Human, Mouse, Rat
Host:	Rabbit
Clonality:	Polyclonal
Conjugate:	This SLC6A18 antibody is un-conjugated
Application:	Western Blotting (WB), Immunohistochemistry (IHC), ELISA

## Product Details

Immunogen:	Antibody produced in rabbits immunized with a synthetic peptide corresponding a region of human SLC6A18.
Purification:	Antibody is purified by protein A chromatography method.

## Target Details

Target:	SLC6A18
Alternative Name:	SLC6A18 ( <a href="#">SLC6A18 Products</a> )
Background:	The function remains unknown.
Molecular Weight:	69 kDa
Gene ID:	348932
NCBI Accession:	<a href="#">NP_872438</a>

## Target Details

UniProt: [Q96N87](#)

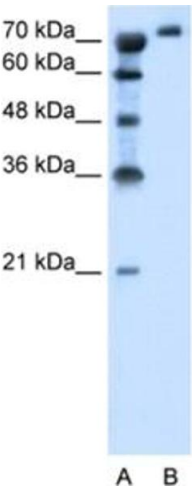
## Application Details

Application Notes:	SLC6A18 antibody can be used for detection of SLC6A18 by ELISA at 1:312500. SLC6A18 antibody can be used for detection of SLC6A18 by western blot at 1.25 µg/mL, and HRP conjugated secondary antibody should be diluted 1:50,000 - 100,000.
Restrictions:	For Research Use only

## Handling

Format:	Lyophilized
Reconstitution:	Add 100 µL of distilled water. Final antibody concentration is 1 mg/mL.
Concentration:	1 mg/mL
Buffer:	Antibody is lyophilized in PBS buffer with 2 % sucrose.
Handling Advice:	As with any antibody avoid repeat freeze-thaw cycles.
Storage:	4 °C/-20 °C
Storage Comment:	For short periods of storage (days) store at 4 °C. For longer periods of storage, store SLC6A18 antibody at -20 °C.

## Images



### Western Blotting

Image 1.