

Datasheet for ABIN2462788  
**anti-SLC26A5 antibody**



[Go to Product page](#)

1 Image

## Overview

Quantity:	100 µL
Target:	SLC26A5
Reactivity:	Human, Mouse, Rat, Dog
Host:	Rabbit
Clonality:	Polyclonal
Conjugate:	This SLC26A5 antibody is un-conjugated
Application:	ELISA, Western Blotting (WB), Immunohistochemistry (IHC)

## Product Details

Immunogen:	Antibody produced in rabbits immunized with a synthetic peptide corresponding a region of human SLC26A5.
Purification:	Antibody is purified by protein A chromatography method.

## Target Details

Target:	SLC26A5
Alternative Name:	SLC26A5 ( <a href="#">SLC26A5 Products</a> )
Background:	<p>SLC26A5 is a member of the SLC26A/SuLP transporter family. SLC26A5 is specifically expressed in outer hair cells (OHCs) of the cochlea and is essential in auditory processing.</p> <p>Intracellular anions are thought to act as extrinsic voltage sensors, which bind to this protein and trigger the conformational changes required for rapid length changes in OHCs. Mutations in its gene have been associated with non-syndromic hearing loss. This gene is a member of the</p>

## Target Details

SLC26A/SulP transporter family. It encodes a protein that is specifically expressed in outer hair cells (OHCs) of the cochlea and is essential in auditory processing. Intracellular anions are thought to act as extrinsic voltage sensors, which bind to this protein and trigger the conformational changes required for rapid length changes in OHCs. Mutations in this gene have been associated with non-syndromic hearing loss. Alternate transcriptional splice variants, encoding different isoforms, have been characterized.

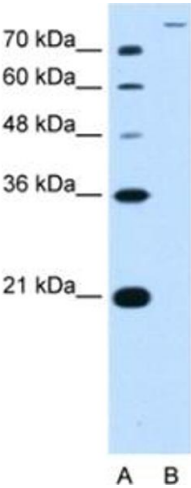
Molecular Weight:	81 kDa, 75 kDa, 56 kDa
Gene ID:	375611
NCBI Accession:	<a href="#">NP_945350</a>
UniProt:	<a href="#">P58743</a>
Pathways:	<a href="#">Sensory Perception of Sound</a> , <a href="#">Dicarboxylic Acid Transport</a>

## Application Details

Application Notes:	SLC26A5 antibody can be used for detection of SLC26A5 by ELISA at 1:312500. SLC26A5 antibody can be used for detection of SLC26A5 by western blot at 2.5 µg/mL, and HRP conjugated secondary antibody should be diluted 1:50,000 - 100,000.
Restrictions:	For Research Use only

## Handling

Format:	Lyophilized
Reconstitution:	Add 100 µL of distilled water. Final antibody concentration is 1 mg/mL.
Concentration:	1 mg/mL
Buffer:	Antibody is lyophilized in PBS buffer with 2 % sucrose.
Handling Advice:	As with any antibody avoid repeat freeze-thaw cycles.
Storage:	4 °C/-20 °C
Storage Comment:	For short periods of storage (days) store at 4 °C. For longer periods of storage, store SLC26A5 antibody at -20 °C.



Western Blotting

Image 1.