

Datasheet for ABIN2462796

anti-SGCG antibody[Go to Product page](#)**1** Image

Overview

Quantity:	100 µL
Target:	SGCG
Reactivity:	Human, Mouse, Rat, Dog
Host:	Rabbit
Clonality:	Polyclonal
Conjugate:	This SGCG antibody is un-conjugated
Application:	Western Blotting (WB), ELISA

Product Details

Immunogen:	Antibody produced in rabbits immunized with a synthetic peptide corresponding a region of human SGCG.
Purification:	Antibody is purified by protein A chromatography method.

Target Details

Target:	SGCG
Alternative Name:	SGCG (SGCG Products)
Background:	Gamma-sarcoglycan is one of several sarcolemmal transmembrane glycoproteins that interact with dystrophin, probably to provide a link between the membrane associated cytoskeleton and the extracellular matrix. Defects in the protein can lead to early onset autosomal recessive muscular dystrophy, in particular limb-girdle muscular dystrophy, type 2C (LGMD2C).Gamma-sarcoglycan is one of several sarcolemmal transmembrane glycoproteins that interact with

Target Details

dystrophin, probably to provide a link between the membrane associated cytoskeleton and the extracellular matrix. Defects in the protein can lead to early onset autosomal recessive muscular dystrophy, in particular limb-girdle muscular dystrophy, type 2C (LGMD2C).

Publication Note: This RefSeq record includes a subset of the publications that are available for this gene. Please see the Entrez Gene record to access additional publications.

Molecular Weight: 32 kDa

Gene ID: 6445

NCBI Accession: [NP_000222](#)

UniProt: [Q13326](#)

Application Details

Application Notes: SGCG antibody can be used for detection of SGCG by ELISA at 1:1562500. SGCG antibody can be used for detection of SGCG by western blot at 1.25 µg/mL, and HRP conjugated secondary antibody should be diluted 1:50,000 - 100,000.

Restrictions: For Research Use only

Handling

Format: Lyophilized

Reconstitution: Add 100 µL of distilled water. Final antibody concentration is 1 mg/mL.

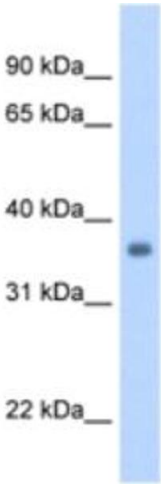
Concentration: 1 mg/mL

Buffer: Antibody is lyophilized in PBS buffer with 2 % sucrose.

Handling Advice: As with any antibody avoid repeat freeze-thaw cycles.

Storage: 4 °C/-20 °C

Storage Comment: For short periods of storage (days) store at 4 °C. For longer periods of storage, store SGCG antibody at -20 °C.



Western Blotting

Image 1.