

Datasheet for ABIN2462819
anti-GPR177/WLS antibody[Go to Product page](#)

1 Image

Overview

Quantity:	100 µL
Target:	GPR177/WLS (WLS)
Reactivity:	Human, Mouse, Dog
Host:	Rabbit
Clonality:	Polyclonal
Conjugate:	This GPR177/WLS antibody is un-conjugated
Application:	ELISA, Western Blotting (WB), Immunohistochemistry (IHC)

Product Details

Immunogen:	Antibody produced in rabbits immunized with a synthetic peptide corresponding a region of human GPR177.
Purification:	Antibody is purified by peptide affinity chromatography method.

Target Details

Target:	GPR177/WLS (WLS)
Alternative Name:	GPR177 (WLS Products)
Background:	The function remains unknown.
Molecular Weight:	52 kDa, 63 kDa, 62 kDa
Gene ID:	79971
UniProt:	Q96IV8

Target Details

Pathways: [WNT Signaling](#)

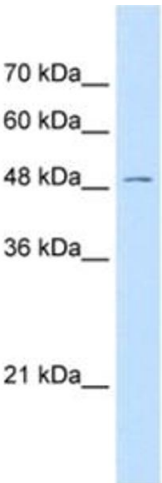
Application Details

Application Notes:	GPR177 antibody can be used for detection of GPR177 by ELISA at 1:62500. GPR177 antibody can be used for detection of GPR177 by western blot at 0.5 µg/mL, and HRP conjugated secondary antibody should be diluted 1:50,000 - 100,000.
Restrictions:	For Research Use only

Handling

Format:	Lyophilized
Reconstitution:	Add 50 µL of distilled water. Final antibody concentration is 1 mg/mL.
Concentration:	1 mg/mL
Buffer:	Antibody is lyophilized in PBS buffer with 2 % sucrose.
Handling Advice:	As with any antibody avoid repeat freeze-thaw cycles.
Storage:	4 °C/-20 °C
Storage Comment:	For short periods of storage (days) store at 4 °C. For longer periods of storage, store GPR177 antibody at -20 °C.

Images



Western Blotting

Image 1.