

Datasheet for ABIN2462851  
**anti-SSR1 antibody**



[Go to Product page](#)

1 Image

## Overview

Quantity:	100 µL
Target:	SSR1
Reactivity:	Human, Mouse, Dog, Rat
Host:	Rabbit
Clonality:	Polyclonal
Conjugate:	This SSR1 antibody is un-conjugated
Application:	Western Blotting (WB), Immunohistochemistry (IHC), ELISA

## Product Details

Immunogen:	Antibody produced in rabbits immunized with a synthetic peptide corresponding a region of human SSR1.
Purification:	Antibody is purified by peptide affinity chromatography method.

## Target Details

Target:	SSR1
Alternative Name:	SSR1 ( <a href="#">SSR1 Products</a> )
Background:	The signal sequence receptor (SSR) is a glycosylated endoplasmic reticulum (ER) membrane receptor associated with protein translocation across the ER membrane. The SSR consists of 2 subunits, a 34-kD glycoprotein encoded by this gene and a 22-kD glycoprotein. The signal sequence receptor (SSR) is a glycosylated endoplasmic reticulum (ER) membrane receptor associated with protein translocation across the ER membrane. The SSR consists of 2

## Target Details

subunits, a 34-kD glycoprotein encoded by this gene and a 22-kD glycoprotein. This gene generates several mRNA species as a result of complex alternative polyadenylation. This gene is unusual in that it utilizes arrays of polyA signal sequences that are exclusively non-canonical.

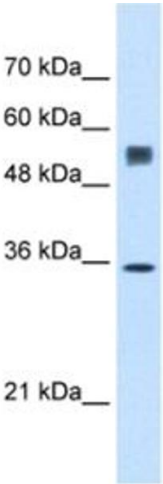
Molecular Weight:	32 kDa
Gene ID:	6745
NCBI Accession:	<a href="#">NP_003135</a>
UniProt:	<a href="#">P43307</a>
Pathways:	<a href="#">ER-Nucleus Signaling</a>

## Application Details

Application Notes:	SSR1 antibody can be used for detection of SSR1 by ELISA at 1:62500. SSR1 antibody can be used for detection of SSR1 by western blot at 0.5 µg/mL, and HRP conjugated secondary antibody should be diluted 1:50,000 - 100,000.
Restrictions:	For Research Use only

## Handling

Format:	Lyophilized
Reconstitution:	Add 50 µL of distilled water. Final antibody concentration is 1 mg/mL.
Concentration:	1 mg/mL
Buffer:	Antibody is lyophilized in PBS buffer with 2 % sucrose.
Handling Advice:	As with any antibody avoid repeat freeze-thaw cycles.
Storage:	4 °C/-20 °C
Storage Comment:	For short periods of storage (days) store at 4 °C. For longer periods of storage, store SSR1 antibody at -20 °C.



Western Blotting

Image 1.