

Datasheet for ABIN2462855

anti-CHST1 antibody[Go to Product page](#)**1** Image

Overview

Quantity:	100 µL
Target:	CHST1
Reactivity:	Human, Mouse, Rat, Dog
Host:	Rabbit
Clonality:	Polyclonal
Conjugate:	This CHST1 antibody is un-conjugated
Application:	Western Blotting (WB), ELISA, Immunohistochemistry (IHC)

Product Details

Immunogen:	Antibody produced in rabbits immunized with a synthetic peptide corresponding a region of human CHST1.
Purification:	Antibody is purified by protein A chromatography method.

Target Details

Target:	CHST1
Alternative Name:	CHST1 (CHST1 Products)
Background:	CHST1 catalyzes the transfer of sulfate to position 6 of galactose (Gal) residues of keratan. It has a preference for sulfating keratan sulfate, but it also transfers sulfate to the unsulfated polymer. The sulfotransferase activity on sialyl LacNAc structures is much higher than the corresponding desialylated substrate, and only internal Gal residues are sulfated. It may function in the sulfation of sialyl N-acetyllactosamine oligosaccharide chains attached to

Target Details

glycoproteins. It participates in biosynthesis of selectin ligands. Selectin ligands are present in high endothelial cells (HEVs) and play a central role in lymphocyte homing at sites of inflammation.

Molecular Weight: 47 kDa

Gene ID: 8534

NCBI Accession: [NP_003645](#)

UniProt: [O43916](#)

Pathways: [Glycosaminoglycan Metabolic Process](#)

Application Details

Application Notes: CHST1 antibody can be used for detection of CHST1 by ELISA at 1:1562500. CHST1 antibody can be used for detection of CHST1 by western blot at 1.25 µg/mL, and HRP conjugated secondary antibody should be diluted 1:50,000 - 100,000.

Restrictions: For Research Use only

Handling

Format: Lyophilized

Reconstitution: Add 100 µL of distilled water. Final antibody concentration is 1 mg/mL.

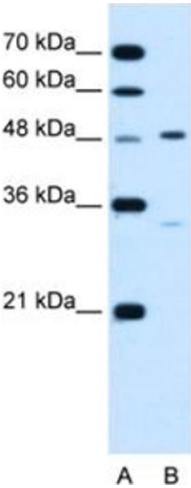
Concentration: 1 mg/mL

Buffer: Antibody is lyophilized in PBS buffer with 2 % sucrose.

Handling Advice: As with any antibody avoid repeat freeze-thaw cycles.

Storage: 4 °C/-20 °C

Storage Comment: For short periods of storage (days) store at 4 °C. For longer periods of storage, store CHST1 antibody at -20 °C.



Western Blotting

Image 1.