

Datasheet for ABIN2462890

**anti-SBDS antibody**[Go to Product page](#)**1** Image

## Overview

Quantity:	100 µL
Target:	SBDS
Reactivity:	Human, Mouse, Rat, Dog
Host:	Rabbit
Clonality:	Polyclonal
Conjugate:	This SBDS antibody is un-conjugated
Application:	Western Blotting (WB), Immunohistochemistry (IHC), ELISA

## Product Details

Immunogen:	Antibody produced in rabbits immunized with a synthetic peptide corresponding a region of human SBDS.
Purification:	Antibody is purified by protein A chromatography method.

## Target Details

Target:	SBDS
Alternative Name:	SBDS ( <a href="#">SBDS Products</a> )
Background:	SBDS is a member of a highly conserved protein family that exists from archaea to vertebrates and plants. The protein may function in RNA metabolism. Mutations within its gene are associated with Shwachman-Bodian-Diamond syndrome. This gene encodes a member of a highly conserved protein family that exists from archaea to vertebrates and plants. The encoded protein may function in RNA metabolism. Mutations within this gene are associated

## Target Details

with Shwachman-Bodian-Diamond syndrome. An alternative transcript has been described, but its biological nature has not been determined. This gene has a closely linked pseudogene that is distally located.

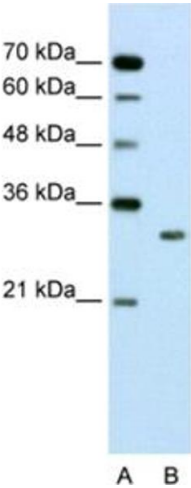
Molecular Weight:	28 kDa
Gene ID:	51119
NCBI Accession:	<a href="#">NP_057122</a>
UniProt:	<a href="#">Q9Y3A5</a>
Pathways:	<a href="#">Ribonucleoprotein Complex Subunit Organization</a> , <a href="#">Ribosome Assembly</a>

## Application Details

Application Notes:	SBDS antibody can be used for detection of SBDS by ELISA at 1:312500. SBDS antibody can be used for detection of SBDS by western blot at 2.5 µg/mL, and HRP conjugated secondary antibody should be diluted 1:50,000 - 100,000.
Restrictions:	For Research Use only

## Handling

Format:	Lyophilized
Reconstitution:	Add 100 µL of distilled water. Final antibody concentration is 1 mg/mL.
Concentration:	1 mg/mL
Buffer:	Antibody is lyophilized in PBS buffer with 2 % sucrose.
Handling Advice:	As with any antibody avoid repeat freeze-thaw cycles.
Storage:	4 °C/-20 °C
Storage Comment:	For short periods of storage (days) store at 4 °C. For longer periods of storage, store SBDS antibody at -20 °C.



Western Blotting

Image 1.