

Datasheet for ABIN2462892

anti-SGPP2 antibody[Go to Product page](#)**1** Image

Overview

Quantity:	100 µL
Target:	SGPP2
Reactivity:	Human
Host:	Rabbit
Clonality:	Polyclonal
Conjugate:	This SGPP2 antibody is un-conjugated
Application:	Western Blotting (WB), ELISA, Immunohistochemistry (IHC)

Product Details

Immunogen:	Antibody produced in rabbits immunized with a synthetic peptide corresponding a region of human SGPP2.
Purification:	Antibody is purified by protein A chromatography method.

Target Details

Target:	SGPP2
Alternative Name:	SGPP2 (SGPP2 Products)
Background:	In vitro, SGPP2 has high phosphohydrolase activity against dihydrosphingosine-1-phosphate and sphingosine-1-phosphate (S1P).
Molecular Weight:	37 kDa, 45 kDa
Gene ID:	130367

Target Details

NCBI Accession: [XP_001128702](#)

UniProt: [Q8IWX5](#)

Application Details

Application Notes: SGPP2 antibody can be used for detection of SGPP2 by ELISA at 1:1562500. SGPP2 antibody can be used for detection of SGPP2 by western blot at 2.5 µg/mL, and HRP conjugated secondary antibody should be diluted 1:50,000 - 100,000.

Restrictions: For Research Use only

Handling

Format: Lyophilized

Reconstitution: Add 100 µL of distilled water. Final antibody concentration is 1 mg/mL.

Concentration: 1 mg/mL

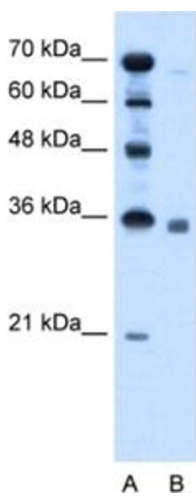
Buffer: Antibody is lyophilized in PBS buffer with 2 % sucrose.

Handling Advice: As with any antibody avoid repeat freeze-thaw cycles.

Storage: 4 °C/-20 °C

Storage Comment: For short periods of storage (days) store at 4 °C. For longer periods of storage, store SGPP2 antibody at -20 °C.

Images



Western Blotting

Image 1.