



Datasheet for ABIN2462908
anti-DONSON antibody



[Go to Product page](#)

1 Image

Overview

| | |
|--------------|---------------------------------------|
| Quantity: | 100 µL |
| Target: | DONSON |
| Reactivity: | Human, Mouse |
| Host: | Rabbit |
| Clonality: | Polyclonal |
| Conjugate: | This DONSON antibody is un-conjugated |
| Application: | Western Blotting (WB), ELISA |

Product Details

| | |
|---------------|---------------------------------------------------------------------------------------------------------|
| Immunogen: | Antibody produced in rabbits immunized with a synthetic peptide corresponding a region of human DONSON. |
| Purification: | Antibody is purified by peptide affinity chromatography method. |

Target Details

| | |
|-------------------|-------------------------------------------------------------------------------------------------------------------------------------------------------------------------------------------------------------------------------------|
| Target: | DONSON |
| Alternative Name: | DONSON (DONSON Products) |
| Background: | This gene lies downstream of the SON gene and spans 10 kb on chromosome 21. The function of this gene is unknown. This gene lies downstream of the SON gene and spans 10 kb on chromosome 21. The function of this gene is unknown. |
| Molecular Weight: | 63 kDa |
| Gene ID: | 29980 |

Target Details

NCBI Accession: [NP_060083](#)

UniProt: [Q9NYP3](#)

Application Details

Application Notes: DONSON antibody can be used for detection of DONSON by ELISA at 1:1562500. DONSON antibody can be used for detection of DONSON by western blot at 1.0 µg/mL, and HRP conjugated secondary antibody should be diluted 1:50,000 - 100,000.

Restrictions: For Research Use only

Handling

Format: Lyophilized

Reconstitution: Add 50 µL of distilled water. Final antibody concentration is 1 mg/mL.

Concentration: 1 mg/mL

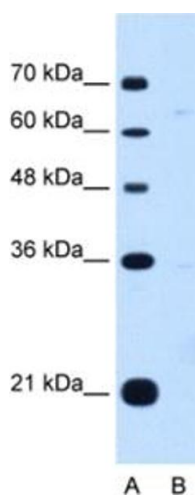
Buffer: Antibody is lyophilized in PBS buffer with 2 % sucrose.

Handling Advice: As with any antibody avoid repeat freeze-thaw cycles.

Storage: 4 °C/-20 °C

Storage Comment: For short periods of storage (days) store at 4 °C. For longer periods of storage, store DONSON antibody at -20 °C.

Images



Western Blotting

Image 1.