

Datasheet for ABIN2462911
anti-LOC728227 antibody



[Go to Product page](#)

1 Image

Overview

| | |
|--------------|--|
| Quantity: | 100 µL |
| Target: | LOC728227 |
| Reactivity: | Human |
| Host: | Rabbit |
| Clonality: | Polyclonal |
| Conjugate: | This LOC728227 antibody is un-conjugated |
| Application: | Immunohistochemistry (IHC), Western Blotting (WB), ELISA |

Product Details

| | |
|---------------|--|
| Immunogen: | Antibody produced in rabbits immunized with a synthetic peptide corresponding a region of human LOC728227. |
| Purification: | Antibody is purified by protein A chromatography method. |

Target Details

| | |
|-------------------|--|
| Target: | LOC728227 |
| Alternative Name: | LOC728227 (LOC728227 Products) |
| Background: | The function remains unknown. |
| Molecular Weight: | 48 kDa |
| Gene ID: | 728227 |
| NCBI Accession: | XP_001126909 |

Application Details

Application Notes: LOC728227 antibody can be used for detection of LOC728227 by ELISA at 1:62500.
LOC728227 antibody can be used for detection of LOC728227 by western blot at 2.5 µg/mL, and HRP conjugated secondary antibody should be diluted 1:50,000 - 100,000.

Restrictions: For Research Use only

Handling

Format: Lyophilized

Reconstitution: Add 100 µL of distilled water. Final antibody concentration is 1 mg/mL.

Concentration: 1 mg/mL

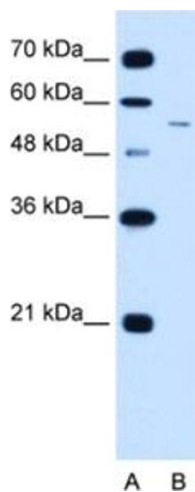
Buffer: Antibody is lyophilized in PBS buffer with 2 % sucrose.

Handling Advice: As with any antibody avoid repeat freeze-thaw cycles.

Storage: 4 °C/-20 °C

Storage Comment: For short periods of storage (days) store at 4 °C. For longer periods of storage, store LOC728227 antibody at -20 °C.

Images



Western Blotting

Image 1.