



[Go to Product page](#)

Datasheet for ABIN2462913  
**anti-LOC400856 antibody**

1 Image

### Overview

Quantity:	100 µL
Target:	LOC400856
Reactivity:	Human
Host:	Rabbit
Clonality:	Polyclonal
Conjugate:	This LOC400856 antibody is un-conjugated
Application:	Immunohistochemistry (IHC), Western Blotting (WB), ELISA

### Product Details

Immunogen:	Antibody produced in rabbits immunized with a synthetic peptide corresponding a region of human LOC400856.
Purification:	Antibody is purified by peptide affinity chromatography method.

### Target Details

Target:	LOC400856
Alternative Name:	LOC400856 ( <a href="#">LOC400856 Products</a> )
Background:	The function remains unknown.
Molecular Weight:	18 kDa
Gene ID:	400856
NCBI Accession:	<a href="#">XP_375929</a>

## Application Details

Application Notes: LOC400856 antibody can be used for detection of LOC400856 by ELISA at 1:2500. LOC400856 antibody can be used for detection of LOC400856 by western blot at 0.5 µg/mL, and HRP conjugated secondary antibody should be diluted 1:50,000 - 100,000.

Restrictions: For Research Use only

## Handling

Format: Lyophilized

Reconstitution: Add 50 µL of distilled water. Final antibody concentration is 1 mg/mL.

Concentration: 1 mg/mL

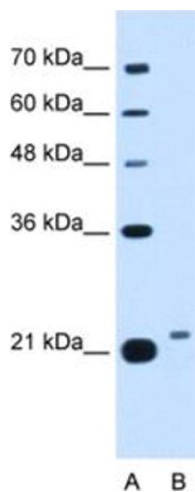
Buffer: Antibody is lyophilized in PBS buffer with 2 % sucrose.

Handling Advice: As with any antibody avoid repeat freeze-thaw cycles.

Storage: 4 °C/-20 °C

Storage Comment: For short periods of storage (days) store at 4 °C. For longer periods of storage, store LOC400856 antibody at -20 °C.

## Images



### Western Blotting

Image 1.