

Datasheet for ABIN2462924
anti-MTHFD2 antibody



[Go to Product page](#)

1 Image

Overview

Quantity:	100 µL
Target:	MTHFD2
Reactivity:	Human, Mouse, Rat, Dog
Host:	Rabbit
Clonality:	Polyclonal
Conjugate:	This MTHFD2 antibody is un-conjugated
Application:	Western Blotting (WB), ELISA

Product Details

Immunogen:	Antibody produced in rabbits immunized with a synthetic peptide corresponding a region of human MTHFD2.
Purification:	Antibody is purified by protein A chromatography method.

Target Details

Target:	MTHFD2
Alternative Name:	MTHFD2 (MTHFD2 Products)
Background:	MTHFD2 is a nuclear-encoded mitochondrial bifunctional enzyme with methylenetetrahydrofolate dehydrogenase and methenyltetrahydrofolate cyclohydrolase activities. The enzyme functions as a homodimer and is unique in its absolute requirement for magnesium and inorganic phosphate. Formation of the enzyme-magnesium complex allows binding of NAD. This gene encodes a nuclear-encoded mitochondrial bifunctional enzyme with

Target Details

methylenetetrahydrofolate dehydrogenase and methenyltetrahydrofolate cyclohydrolase activities. The enzyme functions as a homodimer and is unique in its absolute requirement for magnesium and inorganic phosphate. Formation of the enzyme-magnesium complex allows binding of NAD. Alternative splicing results in multiple transcripts encoding different isoforms. This gene has a pseudogene on chromosome 7.

Molecular Weight: 35 kDa, 27 kDa

Gene ID: 10797

NCBI Accession: [NP_006627](#)

UniProt: [P13995](#)

Application Details

Application Notes: MTHFD2 antibody can be used for detection of MTHFD2 by ELISA at 1:312500. MTHFD2 antibody can be used for detection of MTHFD2 by western blot at 1.25 µg/mL, and HRP conjugated secondary antibody should be diluted 1:50,000 - 100,000.

Restrictions: For Research Use only

Handling

Format: Lyophilized

Reconstitution: Add 100 µL of distilled water. Final antibody concentration is 1 mg/mL.

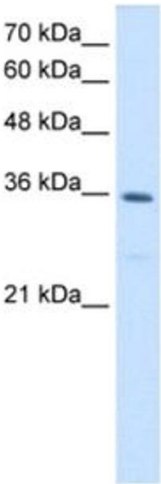
Concentration: 1 mg/mL

Buffer: Antibody is lyophilized in PBS buffer with 2 % sucrose.

Handling Advice: As with any antibody avoid repeat freeze-thaw cycles.

Storage: 4 °C/-20 °C

Storage Comment: For short periods of storage (days) store at 4 °C. For longer periods of storage, store MTHFD2 antibody at -20 °C.



Western Blotting

Image 1.