

Datasheet for ABIN2462986

anti-KCNC1 antibody[Go to Product page](#)**1** Image

Overview

Quantity:	100 µL
Target:	KCNC1
Reactivity:	Human, Mouse, Rat, Dog
Host:	Rabbit
Clonality:	Polyclonal
Conjugate:	This KCNC1 antibody is un-conjugated
Application:	Western Blotting (WB), ELISA

Product Details

Immunogen:	Antibody produced in rabbits immunized with a synthetic peptide corresponding a region of human KCNC1.
Purification:	Antibody is purified by protein A chromatography method.

Target Details

Target:	KCNC1
Alternative Name:	KCNC1 (KCNC1 Products)
Background:	KCNC1 belongs to the delayed rectifier class of channel proteins and is an integral membrane protein that mediates the voltage-dependent potassium ion permeability of excitable membranes. The Shaker gene family of Drosophila encodes components of voltage-gated potassium channels and is comprised of four subfamilies. Based on sequence similarity, this gene is similar to one of these subfamilies, namely the Shaw subfamily. The protein encoded by

Target Details

this gene belongs to the delayed rectifier class of channel proteins and is an integral membrane protein that mediates the voltage-dependent potassium ion permeability of excitable membranes.

Molecular Weight: 58 kDa, 66 kDa

Gene ID: 3746

NCBI Accession: [NP_004967](#)

UniProt: [P48547](#)

Application Details

Application Notes: KCNC1 antibody can be used for detection of KCNC1 by ELISA at 1:1562500. KCNC1 antibody can be used for detection of KCNC1 by western blot at 2.5 µg/mL, and HRP conjugated secondary antibody should be diluted 1:50,000 - 100,000.

Restrictions: For Research Use only

Handling

Format: Lyophilized

Reconstitution: Add 100 µL of distilled water. Final antibody concentration is 1 mg/mL.

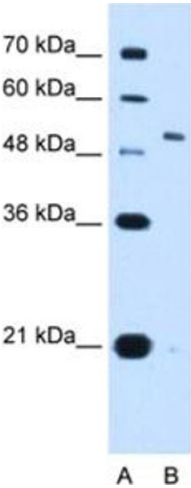
Concentration: 1 mg/mL

Buffer: Antibody is lyophilized in PBS buffer with 2 % sucrose.

Handling Advice: As with any antibody avoid repeat freeze-thaw cycles.

Storage: 4 °C/-20 °C

Storage Comment: For short periods of storage (days) store at 4 °C. For longer periods of storage, store KCNC1 antibody at -20 °C.



Western Blotting

Image 1.