

Datasheet for ABIN2463021
anti-SEC63 antibody



[Go to Product page](#)

1 Image

Overview

Quantity:	100 µL
Target:	SEC63
Reactivity:	Human, Mouse, Dog
Host:	Rabbit
Clonality:	Polyclonal
Conjugate:	This SEC63 antibody is un-conjugated
Application:	Western Blotting (WB), ELISA

Product Details

Immunogen:	Antibody produced in rabbits immunized with a synthetic peptide corresponding a region of human SEC63.
Purification:	Antibody is purified by protein A chromatography method.

Target Details

Target:	SEC63
Alternative Name:	SEC63 (SEC63 Products)
Background:	The Sec61 complex is the central component of the protein translocation apparatus of the endoplasmic reticulum (ER) membrane. SEC63 and SEC62 protein are found to be associated with ribosome-free SEC61 complex. It is speculated that Sec61-Sec62-Sec63 may perform post-translational protein translocation into the ER. The Sec61-Sec62-Sec63 complex might also perform the backward transport of ER proteins that are subject to the ubiquitin-

Target Details

proteasome-dependent degradation pathway. SEC63 is an integral membrane protein located in the rough ER. The Sec61 complex is the central component of the protein translocation apparatus of the endoplasmic reticulum (ER) membrane. The protein encoded by this gene and SEC62 protein are found to be associated with ribosome-free SEC61 complex. It is speculated that Sec61-Sec62-Sec63 may perform post-translational protein translocation into the ER. The Sec61-Sec62-Sec63 complex might also perform the backward transport of ER proteins that are subject to the ubiquitin-proteasome-dependent degradation pathway. The encoded protein is an integral membrane protein located in the rough ER.

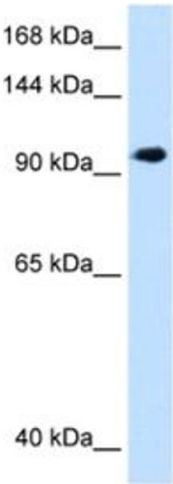
Molecular Weight:	88 kDa
Gene ID:	11231
NCBI Accession:	NP_009145
UniProt:	Q9UGP8
Pathways:	ER-Nucleus Signaling

Application Details

Application Notes:	SEC63 antibody can be used for detection of SEC63 by ELISA at 1:62500. SEC63 antibody can be used for detection of SEC63 by western blot at 1.25 µg/mL, and HRP conjugated secondary antibody should be diluted 1:50,000 - 100,000.
Restrictions:	For Research Use only

Handling

Format:	Lyophilized
Reconstitution:	Add 100 µL of distilled water. Final antibody concentration is 1 mg/mL.
Concentration:	1 mg/mL
Buffer:	Antibody is lyophilized in PBS buffer with 2 % sucrose.
Handling Advice:	As with any antibody avoid repeat freeze-thaw cycles.
Storage:	4 °C/-20 °C
Storage Comment:	For short periods of storage (days) store at 4 °C. For longer periods of storage, store SEC63 antibody at -20 °C.



Western Blotting

Image 1.