

Datasheet for ABIN2463024  
**anti-CHIC2 antibody**



[Go to Product page](#)

1 Image

## Overview

Quantity:	100 µL
Target:	CHIC2
Reactivity:	Human, Mouse, Rat, Dog
Host:	Rabbit
Clonality:	Polyclonal
Conjugate:	This CHIC2 antibody is un-conjugated
Application:	Western Blotting (WB), Immunohistochemistry (IHC), ELISA

## Product Details

Immunogen:	Antibody produced in rabbits immunized with a synthetic peptide corresponding a region of human CHIC2.
Purification:	Antibody is purified by peptide affinity chromatography method.

## Target Details

Target:	CHIC2
Alternative Name:	CHIC2 ( <a href="#">CHIC2 Products</a> )
Background:	<p>CHIC2 is a member of the CHIC family of proteins. This protein contains a cysteine-rich hydrophobic (CHIC) motif, and is localized to vesicular structures and the plasma membrane.</p> <p>CHIC2 gene is associated with some cases of acute myeloid leukemia. This gene encodes a member of the CHIC family of proteins. The encoded protein contains a cysteine-rich hydrophobic (CHIC) motif, and is localized to vesicular structures and the plasma membrane.</p>

## Target Details

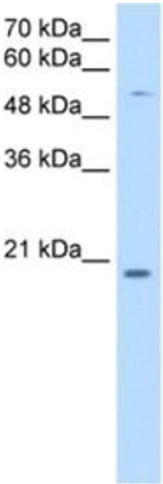
	This gene is associated with some cases of acute myeloid leukemia.
Molecular Weight:	19 kDa
Gene ID:	26511
NCBI Accession:	<a href="#">NP_036242</a>
UniProt:	<a href="#">Q9UKJ5</a>

## Application Details

Application Notes:	CHIC2 antibody can be used for detection of CHIC2 by ELISA at 1:312500. CHIC2 antibody can be used for detection of CHIC2 by western blot at 0.25 µg/mL, and HRP conjugated secondary antibody should be diluted 1:50,000 - 100,000.
Restrictions:	For Research Use only

## Handling

Format:	Lyophilized
Reconstitution:	Add 50 µL of distilled water. Final antibody concentration is 1 mg/mL.
Concentration:	1 mg/mL
Buffer:	Antibody is lyophilized in PBS buffer with 2 % sucrose.
Handling Advice:	As with any antibody avoid repeat freeze-thaw cycles.
Storage:	4 °C/-20 °C
Storage Comment:	For short periods of storage (days) store at 4 °C. For longer periods of storage, store CHIC2 antibody at -20 °C.



**Western Blotting**

**Image 1.**