

Datasheet for ABIN2463030
anti-NPTN antibody



[Go to Product page](#)

1 Image

Overview

Quantity:	100 µL
Target:	NPTN
Reactivity:	Human, Mouse, Rat, Dog
Host:	Rabbit
Clonality:	Polyclonal
Conjugate:	This NPTN antibody is un-conjugated
Application:	Western Blotting (WB), ELISA, Immunohistochemistry (IHC)

Product Details

Immunogen:	Antibody produced in rabbits immunized with a synthetic peptide corresponding a region of human NPTN.
Purification:	Antibody is purified by protein A chromatography method.

Target Details

Target:	NPTN
Alternative Name:	NPTN (NPTN Products)
Background:	Neuroplastin is a type I transmembrane protein belonging to the Ig superfamily. The protein is believed to be involved in cell-cell interactions or cell-substrate interactions. The alpha and beta transcripts show differential localization within the brain. Neuroplastin is a type I transmembrane protein belonging to the Ig superfamily. The protein is believed to be involved in cell-cell interactions or cell-substrate interactions. The alpha and beta transcripts show

Target Details

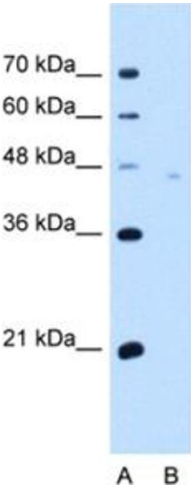
	differential localization within the brain.
Molecular Weight:	42 kDa, 31 kDa
Gene ID:	27020
NCBI Accession:	NP_036560
Pathways:	Regulation of long-term Neuronal Synaptic Plasticity

Application Details

Application Notes:	NPTN antibody can be used for detection of NPTN by ELISA at 1:312500. NPTN antibody can be used for detection of NPTN by western blot at 5.0 µg/mL, and HRP conjugated secondary antibody should be diluted 1:50,000 - 100,000.
Restrictions:	For Research Use only

Handling

Format:	Lyophilized
Reconstitution:	Add 100 µL of distilled water. Final antibody concentration is 1 mg/mL.
Concentration:	1 mg/mL
Buffer:	Antibody is lyophilized in PBS buffer with 2 % sucrose.
Handling Advice:	As with any antibody avoid repeat freeze-thaw cycles.
Storage:	4 °C/-20 °C
Storage Comment:	For short periods of storage (days) store at 4 °C. For longer periods of storage, store NPTN antibody at -20 °C.



Western Blotting

Image 1.