

Datasheet for ABIN2463033
anti-ST6GALNAC6 antibody[Go to Product page](#)

1 Image

Overview

Quantity:	100 µL
Target:	ST6GALNAC6
Reactivity:	Human, Mouse, Rat
Host:	Rabbit
Clonality:	Polyclonal
Conjugate:	This ST6GALNAC6 antibody is un-conjugated
Application:	ELISA, Western Blotting (WB)

Product Details

Immunogen:	Antibody produced in rabbits immunized with a synthetic peptide corresponding a region of human ST6GALNAC6.
Purification:	Antibody is purified by peptide affinity chromatography method.

Target Details

Target:	ST6GALNAC6
Alternative Name:	ST6GALNAC6 (ST6GALNAC6 Products)
Background:	ST6GALNAC6 belongs to a family of sialyltransferases that modify proteins and ceramides on the cell surface to alter cell-cell or cell-extracellular matrix interactions. ST6GALNAC6 belongs to a family of sialyltransferases that modify proteins and ceramides on the cell surface to alter cell-cell or cell-extracellular matrix interactions (Tsuchida et al., 2003 [PubMed 12668675]).
Molecular Weight:	38 kDa

Target Details

Gene ID:	30815
NCBI Accession:	NP_038471
UniProt:	Q969X2

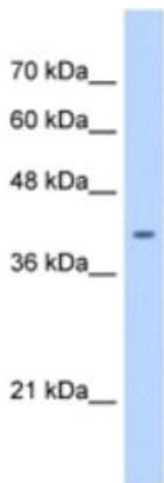
Application Details

Application Notes:	ST6GALNAC6 antibody can be used for detection of ST6GALNAC6 by ELISA at 1:62500. ST6GALNAC6 antibody can be used for detection of ST6GALNAC6 by western blot at 0.5 µg/mL, and HRP conjugated secondary antibody should be diluted 1:50,000 - 100,000.
Restrictions:	For Research Use only

Handling

Format:	Lyophilized
Reconstitution:	Add 50 µL of distilled water. Final antibody concentration is 1 mg/mL.
Concentration:	1 mg/mL
Buffer:	Antibody is lyophilized in PBS buffer with 2 % sucrose.
Handling Advice:	As with any antibody avoid repeat freeze-thaw cycles.
Storage:	4 °C/-20 °C
Storage Comment:	For short periods of storage (days) store at 4 °C. For longer periods of storage, store ST6GALNAC6 antibody at -20 °C.

Images



Western Blotting

Image 1.