

Datasheet for ABIN2463060

anti-FAR2 antibody[Go to Product page](#)**1** Image

Overview

Quantity:	100 µL
Target:	FAR2
Reactivity:	Human, Mouse, Rat
Host:	Rabbit
Clonality:	Polyclonal
Conjugate:	This FAR2 antibody is un-conjugated
Application:	ELISA, Western Blotting (WB)

Product Details

Immunogen:	Antibody produced in rabbits immunized with a synthetic peptide corresponding a region of human MLSTD1.
Purification:	Antibody is purified by peptide affinity chromatography method.

Target Details

Target:	FAR2
Alternative Name:	MLSTD1 (FAR2 Products)
Background:	MLSTD1 catalyzes the reduction of fatty acyl-CoA to fatty alcohols. The preferred substrates are C16, C18, C18:1 and C18:2 but low activity can be observed with C10-C14 substrates.
Molecular Weight:	59 kDa
Gene ID:	55711

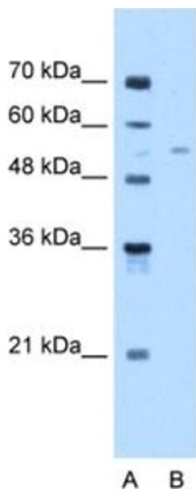
Target Details

NCBI Accession:	NP_060569
UniProt:	Q96K12
Pathways:	SARS-CoV-2 Protein Interactome

Application Details

Application Notes:	MLSTD1 antibody can be used for detection of MLSTD1 by ELISA at 1:312500. MLSTD1 antibody can be used for detection of MLSTD1 by western blot at 1.0 µg/mL, and HRP conjugated secondary antibody should be diluted 1:50,000 - 100,000.
Restrictions:	For Research Use only
Handling	
Format:	Lyophilized
Reconstitution:	Add 50 µL of distilled water. Final antibody concentration is 1 mg/mL.
Concentration:	1 mg/mL
Buffer:	Antibody is lyophilized in PBS buffer with 2 % sucrose.
Handling Advice:	As with any antibody avoid repeat freeze-thaw cycles.
Storage:	4 °C/-20 °C
Storage Comment:	For short periods of storage (days) store at 4 °C. For longer periods of storage, store MLSTD1 antibody at -20 °C.

Images



Western Blotting

Image 1.