

Datasheet for ABIN2463061  
**anti-TMEM30A antibody**



[Go to Product page](#)

1 Image

## Overview

Quantity:	100 µL
Target:	TMEM30A
Reactivity:	Mouse, Rat, Human, Zebrafish (Danio rerio), Dog
Host:	Rabbit
Clonality:	Polyclonal
Conjugate:	This TMEM30A antibody is un-conjugated
Application:	Western Blotting (WB), ELISA, Immunohistochemistry (IHC)

## Product Details

Immunogen:	Antibody produced in rabbits immunized with a synthetic peptide corresponding a region of human TMEM30A.
Purification:	Antibody is purified by peptide affinity chromatography method.

## Target Details

Target:	TMEM30A
Alternative Name:	TMEM30A ( <a href="#">TMEM30A Products</a> )
Background:	The function remains unknown.
Molecular Weight:	41 kDa
Gene ID:	55754
NCBI Accession:	<a href="#">NP_060717</a>

## Target Details

UniProt: Q9NV96

## Application Details

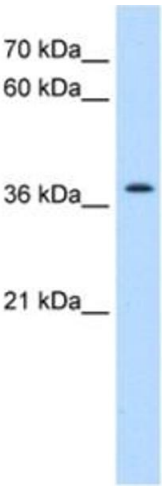
Application Notes: TMEM30A antibody can be used for detection of TMEM30A by ELISA at 1:1562500. TMEM30A antibody can be used for detection of TMEM30A by western blot at 0.25 µg/mL, and HRP conjugated secondary antibody should be diluted 1:50,000 - 100,000.

Restrictions: For Research Use only

## Handling

Format:	Lyophilized
Reconstitution:	Add 50 µL of distilled water. Final antibody concentration is 1 mg/mL.
Concentration:	1 mg/mL
Buffer:	Antibody is lyophilized in PBS buffer with 2 % sucrose.
Handling Advice:	As with any antibody avoid repeat freeze-thaw cycles.
Storage:	4 °C/-20 °C
Storage Comment:	For short periods of storage (days) store at 4 °C. For longer periods of storage, store TMEM30A antibody at -20 °C.

## Images



### Western Blotting

Image 1.