



[Go to Product page](#)

Datasheet for ABIN2463108

anti-Homeotic Protein Proboscipedia antibody

1 Image

Overview

Quantity:	100 µL
Target:	Homeotic Protein Proboscipedia (PB)
Reactivity:	Drosophila melanogaster
Host:	Rabbit
Clonality:	Polyclonal
Conjugate:	This Homeotic Protein Proboscipedia antibody is un-conjugated
Application:	Western Blotting (WB), ELISA

Product Details

Immunogen:	Antibody produced in rabbits immunized with a synthetic peptide corresponding a region of Drosophila PB.
Purification:	Antibody is purified by peptide affinity chromatography method.

Target Details

Target:	Homeotic Protein Proboscipedia (PB)
Alternative Name:	PB (PB Products)
Background:	Pb is a sequence-specific transcription factor which is part of a developmental regulatory system that provides cells with specific positional identities on the anterior-posterior axis. It controls development of mouthparts, and labial and maxillary palps.
Molecular Weight:	83 kDa
Gene ID:	40826

Target Details

NCBI Accession: [NP_996163](#)

UniProt: [P31264](#)

Application Details

Application Notes: PB antibody can be used for detection of PB by ELISA at 1:2500. PB antibody can be used for detection of PB by western blot at 1.0 µg/mL, and HRP conjugated secondary antibody should be diluted 1:50,000 - 100,000.

Restrictions: For Research Use only

Handling

Format: Lyophilized

Reconstitution: Add 50 µL of distilled water. Final antibody concentration is 1 mg/mL.

Concentration: 1 mg/mL

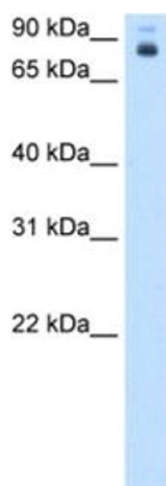
Buffer: Antibody is lyophilized in PBS buffer with 2 % sucrose.

Handling Advice: As with any antibody avoid repeat freeze-thaw cycles.

Storage: 4 °C/-20 °C

Storage Comment: For short periods of storage (days) store at 4 °C. For longer periods of storage, store PB antibody at -20 °C.

Images



Western Blotting

Image 1.