



[Go to Product page](#)

Datasheet for ABIN2463115  
**anti-PRRC2B antibody**

1 Image

### Overview

Quantity:	100 µL
Target:	PRRC2B
Reactivity:	Human, Mouse
Host:	Rabbit
Clonality:	Polyclonal
Conjugate:	This PRRC2B antibody is un-conjugated
Application:	Western Blotting (WB), ELISA

### Product Details

Immunogen:	Antibody produced in rabbits immunized with a synthetic peptide corresponding a region of human KIAA0515.
Purification:	Antibody is purified by peptide affinity chromatography method.

### Target Details

Target:	PRRC2B
Alternative Name:	KIAA0515 ( <a href="#">PRRC2B Products</a> )
Background:	The function remains unknown.
Molecular Weight:	48 kDa, 243 kDa
Gene ID:	84726
UniProt:	<a href="#">Q5JSZ5</a>

## Target Details

Pathways: [SARS-CoV-2 Protein Interactome](#)

## Application Details

Application Notes: KIAA0515 antibody can be used for detection of KIAA0515 by ELISA at 1:312500. KIAA0515 antibody can be used for detection of KIAA0515 by western blot at 0.25 µg/mL, and HRP conjugated secondary antibody should be diluted 1:50,000 - 100,000.

Restrictions: For Research Use only

## Handling

Format: Lyophilized

Reconstitution: Add 50 µL of distilled water. Final antibody concentration is 1 mg/mL.

Concentration: 1 mg/mL

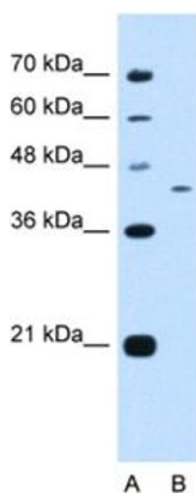
Buffer: Antibody is lyophilized in PBS buffer with 2 % sucrose.

Handling Advice: As with any antibody avoid repeat freeze-thaw cycles.

Storage: 4 °C/-20 °C

Storage Comment: For short periods of storage (days) store at 4 °C. For longer periods of storage, store KIAA0515 antibody at -20 °C.

## Images



### Western Blotting

Image 1.