

Datasheet for ABIN2463208

anti-PAP Associated Domain Containing 7 (PAPD7) antibody[Go to Product page](#)**1** Image

Overview

Quantity:	100 µL
Target:	PAP Associated Domain Containing 7 (PAPD7)
Reactivity:	Human, Mouse, Rat
Host:	Rabbit
Clonality:	Polyclonal
Conjugate:	Un-conjugated
Application:	Western Blotting (WB), ELISA

Product Details

Immunogen:	Antibody produced in rabbits immunized with a synthetic peptide corresponding a region of human POLS.
Purification:	Antibody is purified by peptide affinity chromatography method.

Target Details

Target:	PAP Associated Domain Containing 7 (PAPD7)
Alternative Name:	POLS (PAPD7 Products)
Target Type:	Viral Protein
Background:	POLS is a DNA polymerase that is likely involved in DNA repair. In addition, the protein may be required for sister chromatid adhesion. The protein encoded by this gene is a DNA polymerase that is likely involved in DNA repair. In addition, the encoded protein may be required for sister chromatid adhesion.

Target Details

Molecular Weight:	60 kDa
Gene ID:	11044
NCBI Accession:	NP_008930
UniProt:	Q5XG87

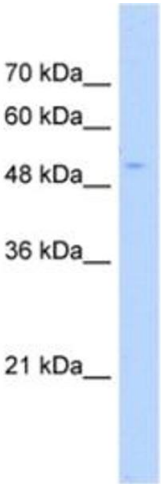
Application Details

Application Notes: POLS antibody can be used for detection of POLS by ELISA at 1:312500. POLS antibody can be used for detection of POLS by western blot at 1.0 µg/mL, and HRP conjugated secondary antibody should be diluted 1:50,000 - 100,000.

Restrictions: For Research Use only

Handling

Format:	Lyophilized
Reconstitution:	Add 50 µL of distilled water. Final antibody concentration is 1 mg/mL.
Concentration:	1 mg/mL
Buffer:	Antibody is lyophilized in PBS buffer with 2 % sucrose.
Handling Advice:	As with any antibody avoid repeat freeze-thaw cycles.
Storage:	4 °C/-20 °C
Storage Comment:	For short periods of storage (days) store at 4 °C. For longer periods of storage, store POLS antibody at -20 °C.



Western Blotting

Image 1.