

Datasheet for ABIN2463210

anti-NAT6 antibody[Go to Product page](#)**1** Image

Overview

Quantity:	100 µL
Target:	NAT6
Reactivity:	Human
Host:	Rabbit
Clonality:	Polyclonal
Conjugate:	This NAT6 antibody is un-conjugated
Application:	Western Blotting (WB), ELISA

Product Details

Immunogen:	Antibody produced in rabbits immunized with a synthetic peptide corresponding a region of human NAT6.
Purification:	Antibody is purified by peptide affinity chromatography method.

Target Details

Target:	NAT6
Alternative Name:	NAT6 (NAT6 Products)
Background:	NAT6 belongs to the acetyltransferase family. It contains 1 N-acetyltransferase domain. NAT6 seems to be involved in N-acetylation. Acts on peptides with a N-terminal Met followed by Asp/Glu/Asn. It may act as a tumor suppressor. Defects in NAT6 are found in non-small cell lung cancer (NSCLC) cell lines.
Molecular Weight:	34 kDa

Target Details

Gene ID:	24142
NCBI Accession:	NP_036323
UniProt:	Q93015

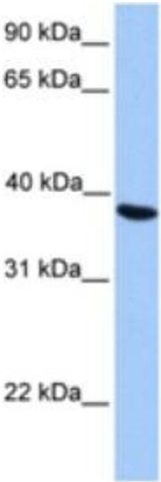
Application Details

Application Notes:	NAT6 antibody can be used for detection of NAT6 by ELISA at 1:62500. NAT6 antibody can be used for detection of NAT6 by western blot at 1 µg/mL, and HRP conjugated secondary antibody should be diluted 1:50,000 - 100,000.
Restrictions:	For Research Use only

Handling

Format:	Lyophilized
Reconstitution:	Add 50 µL of distilled water. Final antibody concentration is 1 mg/mL.
Concentration:	1 mg/mL
Buffer:	Antibody is lyophilized in PBS buffer with 2 % sucrose.
Handling Advice:	As with any antibody avoid repeat freeze-thaw cycles.
Storage:	4 °C/-20 °C
Storage Comment:	For short periods of storage (days) store at 4 °C. For longer periods of storage, store NAT6 antibody at -20 °C.

Images



Western Blotting

Image 1.