

Datasheet for ABIN2463219
anti-POLR3B antibody



[Go to Product page](#)

1 Image

Overview

Quantity:	100 µL
Target:	POLR3B
Reactivity:	Human, Mouse, Rat, Drosophila melanogaster
Host:	Rabbit
Clonality:	Polyclonal
Conjugate:	This POLR3B antibody is un-conjugated
Application:	Western Blotting (WB), ELISA

Product Details

Immunogen:	Antibody produced in rabbits immunized with a synthetic peptide corresponding a region of human POLR3B.
Purification:	Antibody is purified by peptide affinity chromatography method.

Target Details

Target:	POLR3B
Alternative Name:	POLR3B (POLR3B Products)
Background:	POLR3B belongs to the RNA polymerase beta chain family. DNA-dependent RNA polymerase catalyzes the transcription of DNA into RNA using the four ribonucleoside triphosphates as substrates. POLR3B is the second largest core component of RNA polymerase III which synthesizes small RNAs, such as 5S rRNA and tRNAs. It is proposed to contribute to the polymerase catalytic activity and forms the polymerase active center together with the largest

Target Details

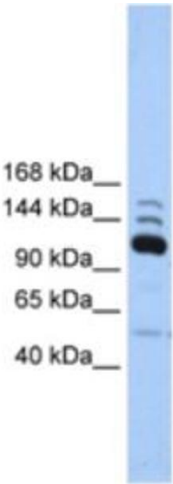
	subunit. Pol III is composed of mobile elements and RPC2 is part of the core element with the central large cleft and probably a clamp element that moves to open and close the cleft.
Molecular Weight:	128 kDa
Gene ID:	55703
NCBI Accession:	NP_060552
UniProt:	Q9NW08

Application Details

Application Notes:	POLR3B antibody can be used for detection of POLR3B by ELISA at 1:12500. POLR3B antibody can be used for detection of POLR3B by western blot at 1 µg/mL, and HRP conjugated secondary antibody should be diluted 1:50,000 - 100,000.
Restrictions:	For Research Use only

Handling

Format:	Lyophilized
Reconstitution:	Add 50 µL of distilled water. Final antibody concentration is 1 mg/mL.
Concentration:	1 mg/mL
Buffer:	Antibody is lyophilized in PBS buffer with 2 % sucrose.
Handling Advice:	As with any antibody avoid repeat freeze-thaw cycles.
Storage:	4 °C/-20 °C
Storage Comment:	For short periods of storage (days) store at 4 °C. For longer periods of storage, store POLR3B antibody at -20 °C.



Western Blotting

Image 1.