

Datasheet for ABIN2463220  
**anti-METTL2B antibody**



[Go to Product page](#)

1 Image

## Overview

Quantity:	100 µL
Target:	METTL2B
Reactivity:	Human
Host:	Rabbit
Clonality:	Polyclonal
Conjugate:	This METTL2B antibody is un-conjugated
Application:	Western Blotting (WB), ELISA

## Product Details

Immunogen:	Antibody produced in rabbits immunized with a synthetic peptide corresponding a region of human METTL2B.
Purification:	Antibody is purified by peptide affinity chromatography method.

## Target Details

Target:	METTL2B
Alternative Name:	METTL2B ( <a href="#">METTL2B Products</a> )
Background:	METTL2B is a member of a family of methyltransferases that share homology with, but are distinct from, the UbiE family of methyltransferases. This gene is a member of a family of methyltransferases that share homology with, but are distinct from, the UbiE family of methyltransferases. Alternatively spliced variants which encode different protein isoforms have been described, however, not all variants have been fully characterized.

## Target Details

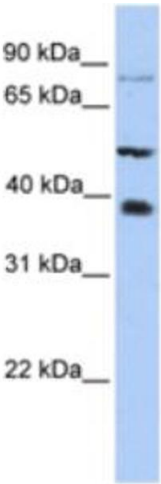
Molecular Weight:	43 kDa
Gene ID:	55798
NCBI Accession:	<a href="#">NP_060866</a>
UniProt:	<a href="#">Q6P1Q9</a>

## Application Details

Application Notes:	METTL2B antibody can be used for detection of METTL2B by ELISA at 1:62500. METTL2B antibody can be used for detection of METTL2B by western blot at 1 µg/mL, and HRP conjugated secondary antibody should be diluted 1:50,000 - 100,000.
Restrictions:	For Research Use only

## Handling

Format:	Lyophilized
Reconstitution:	Add 50 µL of distilled water. Final antibody concentration is 1 mg/mL.
Concentration:	1 mg/mL
Buffer:	Antibody is lyophilized in PBS buffer with 2 % sucrose.
Handling Advice:	As with any antibody avoid repeat freeze-thaw cycles.
Storage:	4 °C/-20 °C
Storage Comment:	For short periods of storage (days) store at 4 °C. For longer periods of storage, store METTL2B antibody at -20 °C.



Western Blotting

Image 1.