

Datasheet for ABIN2463245

anti-ALG2 antibody[Go to Product page](#)**1** Image

Overview

Quantity:	100 µL
Target:	ALG2
Reactivity:	Human, Mouse, Rat
Host:	Rabbit
Clonality:	Polyclonal
Conjugate:	This ALG2 antibody is un-conjugated
Application:	Western Blotting (WB), ELISA

Product Details

Immunogen:	Antibody produced in rabbits immunized with a synthetic peptide corresponding a region of human ALG2.
Purification:	Antibody is purified by peptide affinity chromatography method.

Target Details

Target:	ALG2
Alternative Name:	ALG2 (ALG2 Products)
Background:	ALG2 is a member of the glycosyltransferase 1 family. It acts as an alpha 1,3 mannosyltransferase, mannosylating Man (2)GlcNAc (2)-dolichol diphosphate and Man (1)GlcNAc (2)-dolichol diphosphate to form Man (3)GlcNAc (2)-dolichol diphosphate. Defects in this gene have been associated with congenital disorder of glycosylation type 1h (CDG-Ih). This gene encodes a member of the glycosyltransferase 1 family. The encoded protein acts as an

Target Details

alpha 1,3 mannosyltransferase, mannosylating Man (2)GlcNAc (2)-dolichol diphosphate and Man (1)GlcNAc (2)-dolichol diphosphate to form Man (3)GlcNAc (2)-dolichol diphosphate. Defects in this gene have been associated with congenital disorder of glycosylation type 1h (CDG-1h). Publication Note: This RefSeq record includes a subset of the publications that are available for this gene. Please see the Entrez Gene record to access additional publications.

Molecular Weight:	47 kDa
Gene ID:	85365
NCBI Accession:	NP_149078
UniProt:	Q9H553

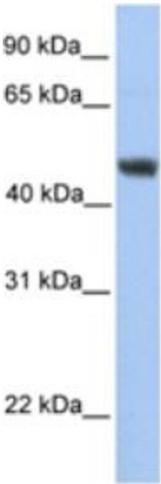
Application Details

Application Notes: ALG2 antibody can be used for detection of ALG2 by ELISA at 1:312500. ALG2 antibody can be used for detection of ALG2 by western blot at 1 µg/mL, and HRP conjugated secondary antibody should be diluted 1:50,000 - 100,000.

Restrictions: For Research Use only

Handling

Format:	Lyophilized
Reconstitution:	Add 50 µL of distilled water. Final antibody concentration is 1 mg/mL.
Concentration:	1 mg/mL
Buffer:	Antibody is lyophilized in PBS buffer with 2 % sucrose.
Handling Advice:	As with any antibody avoid repeat freeze-thaw cycles.
Storage:	4 °C/-20 °C
Storage Comment:	For short periods of storage (days) store at 4 °C. For longer periods of storage, store ALG2 antibody at -20 °C.



Western Blotting

Image 1.